

## Recombinant Human PRSS2 protein, His-SUMO-tagged

Cat. No. PRSS2-1367H Lot. No. (See product label)

### SPECIFICATION

<b>Product Overview</b>	Recombinant Human PRSS2 protein(P07478)(24-247aa), fused to N-terminal His-SUMO tag, was expressed in E. coli.
<b>Species</b>	Human
<b>Source</b>	E.coli
<b>ProteinLength</b>	24-247aa
<b>Form</b>	If the delivery form is liquid, the default storage buffer is Tris/PBS-based buffer, 5%-50% glycerol. If the delivery form is lyophilized powder, the buffer before lyophilization is Tris/PBS-based buffer, 6% Trehalose, pH 8.0.
<b>Molecular Mass</b>	37.0 kDa
<b>Purity</b>	Greater than 85% as determined by SDS-PAGE.
<b>Storage</b>	Store at -20°C/-80°C upon receipt, aliquoting is necessary for mutiple use. Avoid repeated freeze-thaw cycles.
<b>Reconstitution</b>	It is recommended that sterile water be added to the vial to prepare a stock solution of 0.2 ug/ul. Centrifuge the vial at 4°C before opening to recover the entire contents.

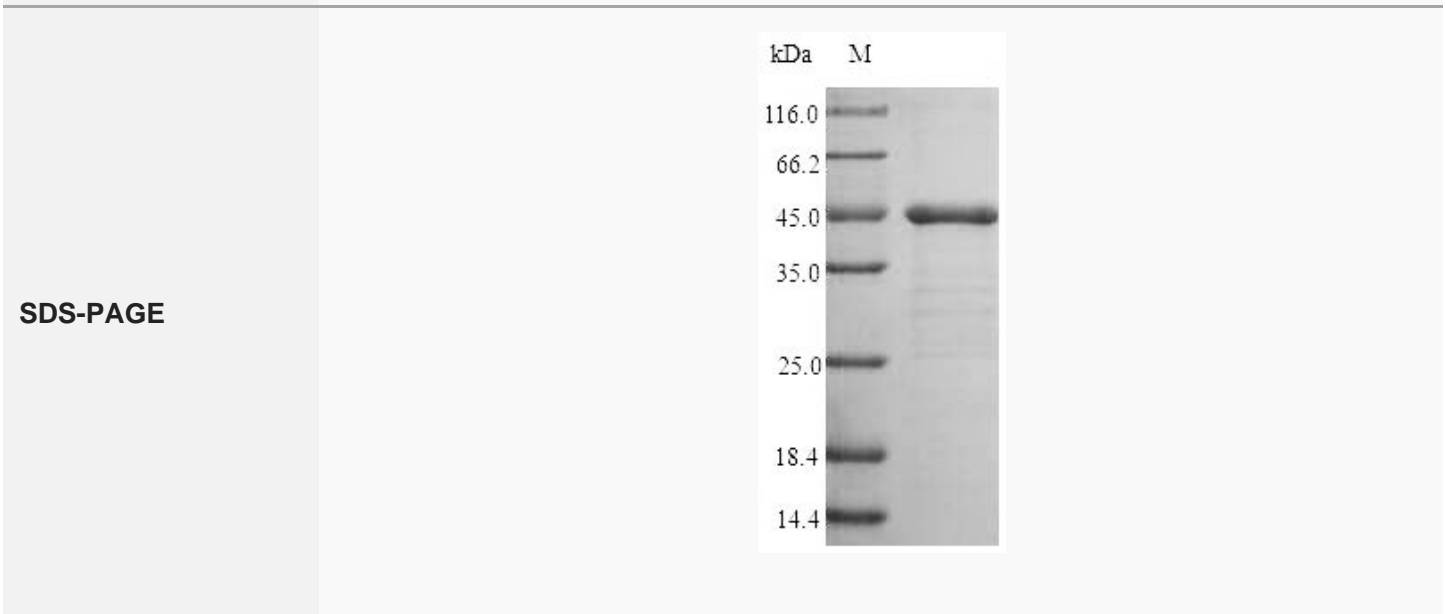
### GENE INFORMATION

 Tel: 1-631-559-9269 1-516-512-3133

 Email: [info@creative-biomart.com](mailto:info@creative-biomart.com)  Fax: 1-631-938-8127

 45-1 Ramsey Road, Shirley, NY 11967, USA

<b>Gene Name</b>	PRSS2 protease, serine, 2 (trypsin 2) [ Homo sapiens ]
<b>Official Symbol</b>	PRSS2
<b>Synonyms</b>	PRSS2; protease, serine, 2 (trypsin 2); trypsin-2; TRY2; trypsin 2; trypsin II; trypsinogen 2; serine protease 2; anionic trypsinogen; protease serine 2 preproprotein; protease, serine, 2, preproprotein; TRY8; TRYP2; MGC111183; MGC120174; MGC120175;
<b>Gene ID</b>	5645
<b>mRNA Refseq</b>	NM_002770
<b>Protein Refseq</b>	NP_002761
<b>MIM</b>	601564
<b>UniProt ID</b>	P07478



Tel: 1-631-559-9269 1-516-512-3133

Email: [info@creative-biomart.com](mailto:info@creative-biomart.com) Fax: 1-631-938-8127

45-1 Ramsey Road, Shirley, NY 11967, USA