

Active Recombinant Pig PRSS2 protein, His-tagged

Cat. No. PRSS2-4911P Lot. No. (See product label)

SPECIFICATION

Product Overview	Active Recombinant Pig PRSS2 protein(P00761)(1~231 aa), fused with N-terminal His tag, was expressed in CHO.
Species	Pig
Source	CHO
ProteinLength	1-231 aa
Form	Lyophilized from sterile PBS, pH7.4, containing 0.01% SKL, 1mM DTT, 5% Trehalose and Proclin300.
Bio-activity	<p>Trypsin is a serine protease from the PA clan superfamily, found in the digestive system of many vertebrates, where it hydrolyzes proteins. Trypsin cuts peptide chains mainly at the carboxyl side of the amino acids lysine or arginine. It is used for numerous biotechnological processes. The connection between animal cells is a specific connection formed by the differentiation of the plasma membrane (cell membrane) between adjacent cells. The plasma membrane is mostly composed of protein-lipid-protein unit membrane, and the proteins on the plasma membrane are mostly involved in the connection. Thus, the digestion of adherent cells HepG2 was to detect the bioactivity of recombinant pig trypsin. HepG2 cells were seeded into 96-well plates at a density of 4,000 cells/well with 10% serum standard DMEM overnight. Various concentrations of recombinant pig trypsin was added into the HepG2 after washed by PBS buffer. Cells were observed by inverted microscope after a period of</p>

 Tel: 1-631-559-9269 1-516-512-3133

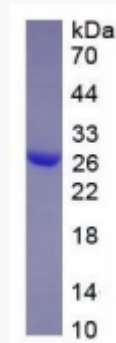
 Email: info@creative-biomart.com  Fax: 1-631-938-8127

 45-1 Ramsey Road, Shirley, NY 11967, USA

time cultured at 37°C. The result was shown. It was obvious that recombinant pig trypsin can digest the HepG2, the minimum protein concentration was 46.9 ug/ml.

Molecular Mass	25.4kDa
Endotoxin	<1.0EU per 1µg (determined by the LAL method).
Purity	> 95% as determined by SDS-PAGE.
Storage	Avoid repeated freeze/thaw cycles. Store at -20°C for 12 months. Aliquot and store at -80°C for 12 months.
Reconstitution	Reconstitute in 10mM PBS (pH7.4) to a concentration of 0.1-1.0 mg/mL. Do not vortex.

SDS-PAGE



 Tel: 1-631-559-9269 1-516-512-3133

 Email: info@creative-biomart.com  Fax: 1-631-938-8127

 45-1 Ramsey Road, Shirley, NY 11967, USA