

## Recombinant Pig PRSS2 Protein, His-tagged

Cat. No. PRSS2-493P Lot. No. (See product label)

### SPECIFICATION

<b>Product Overview</b>	Recombinant Pig PRSS2 Protein (Ile9-Asn231) with N-His tag was expressed in E. coli.
<b>Species</b>	Pig
<b>Source</b>	E.coli
<b>ProteinLength</b>	Ile9-Asn231
<b>Description</b>	Restricted expression toward ovary (RPKM 1.4).
<b>Form</b>	Freeze-dried powder
<b>Molecular Mass</b>	Predicted Molecular Mass: 27.2 kDa Accurate Molecular Mass: 26 kDa
<b>Purity</b>	> 95%
<b>Applications</b>	Positive Control; Immunogen; SDS-PAGE; WB.
<b>Stability</b>	The thermal stability is described by the loss rate. The loss rate was determined by accelerated thermal degradation test, that is, incubate the protein at 37 centigrade for 48h, and no obvious degradation and precipitation were observed. The loss rate is less than 5% within the expiration date under appropriate storage condition.

 Tel: 1-631-559-9269 1-516-512-3133

 Email: [info@creative-biomart.com](mailto:info@creative-biomart.com)  Fax: 1-631-938-8127

 45-1 Ramsey Road, Shirley, NY 11967, USA

**Storage** Avoid repeated freeze/thaw cycles. Store at 2-8 centigrade for one month. Aliquot and store at -80 centigrade for 12 months.

**Storage Buffer** 20mM Tris, 150mM NaCl, pH8.0, containing 1mM EDTA, 1mM DTT, 0.01% SKL, 5% Trehalose and Proclin300.

**Reconstitution** Reconstitute in sterile water to a concentration of 0.1-1.0 mg/mL. Do not vortex.

## GENE INFORMATION

**Gene Name** PRSS2 serine protease 2 [ *Sus scrofa* (pig) ]

**Official Symbol** PRSS2

**Synonyms** PRSS2; serine protease 2; TRY; trypsin-2; protease, serine 2; putative trypsinogen; EC 3.4.21.4

**Gene ID** 100525899

**mRNA Refseq** NM\_001206438

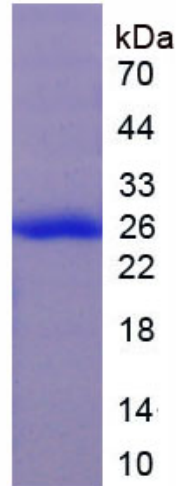
**Protein Refseq** NP\_001193367

**UniProt ID** C6L245

 Tel: 1-631-559-9269 1-516-512-3133

 Email: [info@creative-biomart.com](mailto:info@creative-biomart.com)  Fax: 1-631-938-8127

 45-1 Ramsey Road, Shirley, NY 11967, USA



Tel: 1-631-559-9269 1-516-512-3133

Email: [info@creative-biomart.com](mailto:info@creative-biomart.com) Fax: 1-631-938-8127

45-1 Ramsey Road, Shirley, NY 11967, USA