

Recombinant Human PRSS2 Protein (Ile24-Asp241), N-His tagged

Cat. No. PRSS2-6016H Lot. No. (See product label)

SPECIFICATION

Product Overview	Recombinant human PRSS2 (Ile24-Asp241) fused with the N-His tag was expressed in E. coli.
Species	Human
Source	E.coli
ProteinLength	Ile24-Asp241
Form	Lyophilized powder/frozen liquid
Molecular Mass	25.79 kDa
Purity	> 90 % as determined by SDS-PAGE
Notes	For research use only.
Storage	Use a manual defrost freezer and avoid repeated freeze thaw cycles. Store at 2 to 8 centigrade for one week. Store at -20 to -80 centigrade for twelve months from the date of receipt.
Storage Buffer	0.01M PBS, pH 7.4, 0.02 % NLS
Reconstitution	Reconstitute in sterile water for a stock solution.

 Tel: 1-631-559-9269 1-516-512-3133

 Email: info@creative-biomart.com  Fax: 1-631-938-8127

 45-1 Ramsey Road, Shirley, NY 11967, USA

Shipping They are shipped out with dry ice/blue ice unless customers require otherwise.

GENE INFORMATION

Gene Name PRSS2 protease, serine, 2 (trypsin 2) [Homo sapiens (human)]

Official Symbol PRSS2

Synonyms PRSS2; protease, serine, 2 (trypsin 2); trypsin-2; TRY2; trypsin 2; trypsin II; trypsinogen 2; serine protease 2; anionic trypsinogen; protease serine 2 preproprotein; protease, serine, 2, preproprotein; TRY8; TRYP2; MGC111183; MGC120174; MGC120175;

Gene ID 5645

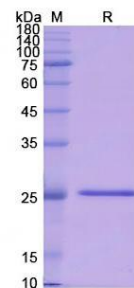
mRNA Refseq NM_002770

Protein Refseq NP_002761

MIM 601564

UniProt ID P07478

SDS-PAGE



 Tel: 1-631-559-9269 1-516-512-3133

 Email: info@creative-biomart.com  Fax: 1-631-938-8127

 45-1 Ramsey Road, Shirley, NY 11967, USA