

## Recombinant Human PRSS21 Protein (42-288 aa), His-tagged

Cat. No. PRSS21-2245H Lot. No. (See product label)

### SPECIFICATION

<b>Product Overview</b>	Recombinant Human PRSS21 Protein (42-288 aa) is produced by E. coli expression system. This protein is fused with a 6xHis tag at the N-terminal. Research Area: Cancer. Protein Description: Full Length of Mature Protein.
<b>Species</b>	Human
<b>Source</b>	E.coli
<b>ProteinLength</b>	42-288 aa
<b>Description</b>	Could regulate proteolytic events associated with testicular germ cell maturation.
<b>Form</b>	Tris-based buffer,50% glycerol
<b>Molecular Mass</b>	31.8 kDa
<b>AA Sequence</b>	IVGGEDAELGRWPWQGSLRLWDSHVCVGSLLSHRWALTAAHCFETYSDLSDPSG WMVQFGQLTSMPSFWSLQAYYTRYFVSNIIYLSPRYLGNSPYDIALVKLSAPVITYTKH IQPICLQASTFEFENRTDCWVTGWGYIKEDEALPSPHTLQEVQVAIINNSMCNHLFLK YSFRKDIFGDMVCAGNAQGGKDACFGDSSGGLACNKNGLWYQIGVVSWSGVGCGR PNRPGVYTNISHHFEWIQKLMAQS
<b>Purity</b>	> 90% as determined by SDS-PAGE.
<b>Notes</b>	Repeated freezing and thawing is not recommended. Store working aliquots at 4

 Tel: 1-631-559-9269 1-516-512-3133

 Email: [info@creative-biomart.com](mailto:info@creative-biomart.com)  Fax: 1-631-938-8127

 45-1 Ramsey Road, Shirley, NY 11967, USA

centigrade for up to one week.

**Storage**

The shelf life is related to many factors, storage state, buffer ingredients, storage temperature and the stability of the protein itself. Generally, the shelf life of liquid form is 6 months at -20 centigrade/-80 centigrade. The shelf life of lyophilized form is 12 months at -20 centigrade/-80 centigrade.

**Concentration**

A hardcopy of COA will be sent along with the products. Please refer to it for detailed information.

## GENE INFORMATION

**Gene Name**

PRSS21 protease, serine, 21 (testisin) [ Homo sapiens ]

**Official Symbol**

PRSS21

**Synonyms**

PRSS21; testisin; ESP 1; TEST1; TESTISIN; serine protease 21; ESP1; ESP-1;

**Gene ID**

10942

**mRNA Refseq**

NM\_006799

**Protein Refseq**

NP\_006790

**MIM**

608159

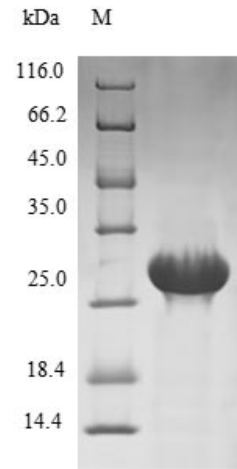
**UniProt ID**

Q9Y6M0

 Tel: 1-631-559-9269 1-516-512-3133

 Email: [info@creative-biomart.com](mailto:info@creative-biomart.com)  Fax: 1-631-938-8127

 45-1 Ramsey Road, Shirley, NY 11967, USA



(Tris-Glycine gel) Discontinuous SDS-PAGE (reduced) with 5% enrichment gel and 15% separation gel.

 Tel: 1-631-559-9269 1-516-512-3133

 Email: [info@creative-biomart.com](mailto:info@creative-biomart.com)  Fax: 1-631-938-8127

 45-1 Ramsey Road, Shirley, NY 11967, USA