

## Recombinant Mouse PRSS21 protein, His-tagged

Cat. No. PRSS21-583M Lot. No. (See product label)

### SPECIFICATION

<b>Product Overview</b>	Recombinant Mouse PRSS21 protein(Q9JHJ7)(Leu22-Asn298), fused with His tag, was expressed in HEK293.
<b>Species</b>	Human
<b>Source</b>	HEK293
<b>ProteinLength</b>	Leu22-Asn298
<b>Form</b>	Lyophilized from 0.22 µm filtered solution in PBS, pH7.4.
<b>Molecular Mass</b>	The protein has a calculated MW of 33kDa. The non-reducing (N-R) heterodimer protein migrates as 40-60 kDa due to glycosylation
<b>Endotoxin</b>	<1EU/mg
<b>Purity</b>	SDS-PAGE>90%
<b>Storage</b>	Store at -20°C.
<b>Reconstitution</b>	sterile H36O

### GENE INFORMATION

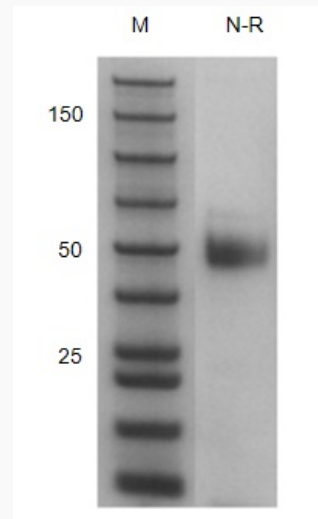
<b>Gene Name</b>	PRSS21 protease, serine, 21 (testisin) [ Homo sapiens ]
------------------	---

 Tel: 1-631-559-9269 1-516-512-3133

 Email: [info@creative-biomart.com](mailto:info@creative-biomart.com)  Fax: 1-631-938-8127

 45-1 Ramsey Road, Shirley, NY 11967, USA

<b>Official Symbol</b>	PRSS21
<b>Synonyms</b>	PRSS21; protease, serine, 21 (testisin); testisin; ESP 1; TEST1; TESTISIN; serine protease 21; eosinophil serine protease 1; serine protease from eosinophils; ESP1; ESP-1;
<b>Gene ID</b>	10942
<b>mRNA Refseq</b>	NM_006799
<b>Protein Refseq</b>	NP_006790
<b>MIM</b>	608159
<b>UniProt ID</b>	Q9Y6M0

**SDS-PAGE**


Tel: 1-631-559-9269 1-516-512-3133

Email: [info@creative-biomart.com](mailto:info@creative-biomart.com) Fax: 1-631-938-8127

45-1 Ramsey Road, Shirley, NY 11967, USA