

## Recombinant Human PRSS50 protein, His-tagged

Cat. No. PRSS50-865H Lot. No. (See product label)

### SPECIFICATION

<b>Product Overview</b>	Recombinant Human PRSS50 protein(Q9UI38)(40-385aa), fused with C-terminal His tag, was expressed in E.coli.
<b>Species</b>	Human
<b>Source</b>	E.coli
<b>ProteinLength</b>	40-385a.a.
<b>Tag</b>	His
<b>Form</b>	If the delivery form is liquid, the default storage buffer is Tris/PBS-based buffer, 5%-50% glycerol. If the delivery form is lyophilized powder, the buffer before lyophilization is Tris/PBS-based buffer, 6% Trehalose, pH 8.0.
<b>Molecular Mass</b>	45.8 kDa
<b>Purity</b>	Greater than 90% as determined by SDS-PAGE.
<b>Storage</b>	Store at -20°C/-80°C upon receipt, aliquoting is necessary for mutiple use. Avoid repeated freeze-thaw cycles.
<b>Reconstitution</b>	We recommend that this vial be briefly centrifuged prior to opening to bring the contents to the bottom. Please reconstitute protein in deionized sterile water to a concentration of 0.1-1.0 mg/mL.We recommend to add 5-50% of glycerol (final

 Tel: 1-631-559-9269 1-516-512-3133

 Email: [info@creative-biomart.com](mailto:info@creative-biomart.com)  Fax: 1-631-938-8127

 45-1 Ramsey Road, Shirley, NY 11967, USA

concentration) and aliquot for long-term storage at -20°C/-80°C.

**AA Sequence**

```
AGEAPGALSTADPADQSVQCVPKATCPSSRPRLWQTPPTQTLPSTTMETQFPVSE
GKVDPYRSCGFSYEQDPTLRDPEAVARRWPWMVSVRANGTHICAGTIIASQWVLTV
AHCLIWRDVIYSVRVGGSPWIDQMTQTASDVPVLQVIMHSRYRAQRFWSWVGQANDI
GLLKLKQELKYSNYVRPICLPGTDYVLKDHRSRCTVTGWGLSKADGMWPQFRTIQEK
EVIILNNKECDNFYHNFTKIPTLVQIIKSQMMCAEDTHREKFCYELTGEPLVCSMEGT
WYLVGLVSWGAGCQKSEAPPIYLQVSSYQHWIWDCLNGQALALPAPSRTLLLALPL
PLSLLAAL
```

## GENE INFORMATION

**Gene Name** [PRSS50 protease, serine, 50 \[ Homo sapiens \]](#)

**Official Symbol** [PRSS50](#)

**Synonyms** [PRSS50](#); protease, serine, 50; probable threonine protease [PRSS50](#); cancer/testis antigen 20; CT20; testes specific protease 50; TSP50; serine protease 50; testes-specific protease 50; testis-specific protease-like protein 50;

**Gene ID** [29122](#)

**mRNA Refseq** [NM\\_013270](#)

**Protein Refseq** [NP\\_037402](#)

**MIM** [607950](#)

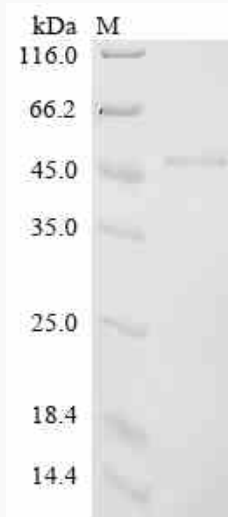
**UniProt ID** [Q9UI38](#)

 Tel: 1-631-559-9269 1-516-512-3133

 Email: [info@creative-biomart.com](mailto:info@creative-biomart.com)  Fax: 1-631-938-8127

 45-1 Ramsey Road, Shirley, NY 11967, USA

**SDS-PAGE**



 Tel: 1-631-559-9269 1-516-512-3133

 Email: [info@creative-biomart.com](mailto:info@creative-biomart.com)  Fax: 1-631-938-8127

 45-1 Ramsey Road, Shirley, NY 11967, USA