

Recombinant Human PRTN3 Protein, His-tagged

Cat. No. PRTN3-1996H Lot. No. (See product label)

SPECIFICATION

Product Overview	Recombinant human PRTN3 protein (His71~Leu247) with a N-terminal His tag was expressed in E.coli.
Species	Human
Source	E.coli
ProteinLength	71-247 a.a.
Description	Restricted expression toward bone marrow (RPKM 616.2).
Form	Freeze-dried powder
Molecular Mass	20.8 kDa
Purity	>95%
Applications	Positive Control; Immunogen; SDS-PAGE; WB.
Stability	The thermal stability is described by the loss rate. The loss rate was determined by accelerated thermal degradation test, that is, incubate the protein at 37 centigrade for 48h, and no obvious degradation and precipitation were observed. The loss rate is less than 5% within the expiration date under appropriate storage condition.
Storage	Avoid repeated freeze/thaw cycles. Store at 2-8 centigrade for one month. Aliquot and

 Tel: 1-631-559-9269 1-516-512-3133

 Email: info@creative-biomart.com  Fax: 1-631-938-8127

 45-1 Ramsey Road, Shirley, NY 11967, USA

store at -80 centigrade for 12 months.

Concentration 200 µg/mL

Storage Buffer 20mM Tris, 150mM NaCl, pH8.0, containing 1mM EDTA, 1mM DTT, 0.01% sarcosyl, 5%Trehalose and Proclin300.

Reconstitution Reconstitute in 20mM Tris, 150mM NaCl (pH8.0) to a concentration of 0.1-1.0 mg/mL. Do not vortex.

GENE INFORMATION

Gene Name PRTN3 proteinase 3 [Homo sapiens (human)]

Official Symbol PRTN3

Synonyms PRTN3; proteinase 3; MBN; MBT; NP4; P29; PR3; ACPA; AGP7; NP-4; PR-3; CANCA; C-ANCA; myeloblastin; C-ANCA antigen; Wegener granulomatosis autoantigen; azurophil granule protein 7; leukocyte proteinase 3; neutrophil proteinase 4; serine proteinase, neutrophil; wegener autoantigen; EC 3.4.21.76

Gene ID 5657

mRNA Refseq NM_002777

Protein Refseq NP_002768

MIM 177020

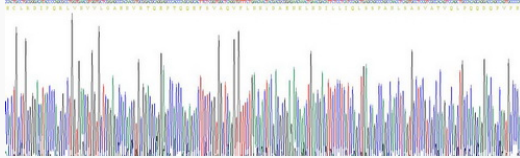
UniProt ID P24158

 Tel: 1-631-559-9269 1-516-512-3133

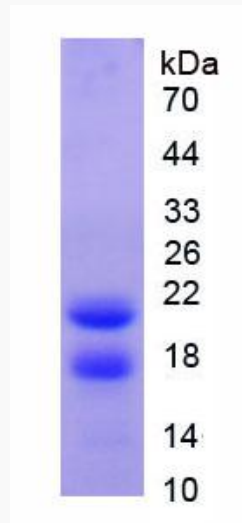
 Email: info@creative-biomart.com  Fax: 1-631-938-8127

 45-1 Ramsey Road, Shirley, NY 11967, USA

Gene sequencing



SDS-PAGE



 Tel: 1-631-559-9269 1-516-512-3133

 Email: info@creative-biomart.com  Fax: 1-631-938-8127

 45-1 Ramsey Road, Shirley, NY 11967, USA