

Recombinant Human PSEN1 Protein, His-tagged

Cat. No. PSEN1-2004H Lot. No. (See product label)

SPECIFICATION

Product Overview	Recombinant Human PSEN1 protein(254-377aa), fused with N-terminal His tag, was expressed in E. coli.
Species	Human
Source	E.coli
ProteinLength	254-377aa
Tag	N-His
Form	Liquid in sterile PBS, pH7.4.
Molecular Mass	The protein has a calculated MW of 18 kDa.
Endotoxin	<1.0EU per 1µg (determined by the LAL method).
Purity	> 90 % as determined by SDS-PAGE.
Storage	Store it under sterile conditions at -80°C. It is recommended that the protein be aliquoted for optimal storage. Avoid repeated freeze-thaw cycles.
Concentration	1.0 mg/ml.
Reconstitution	Centrifuge the vial at 4°C before opening to recover the entire contents.

 Tel: 1-631-559-9269 1-516-512-3133

 Email: info@creative-biomart.com  Fax: 1-631-938-8127

 45-1 Ramsey Road, Shirley, NY 11967, USA

AA Sequence MGSSHHHHHHHHSSGLVPRGSHMASMTGGQQMGRGSLVAVLCPKGPLRMLV
 ETAQERNETLFPALIYSSTMVWLVNMAEGDPEAQR RVSKNSKYNAESTERESQDTV
 AENDDGGFSEEWEAQRDShLGPHRSTPESRAAVQELSSSILAGEDPEERGVKL

GENE INFORMATION

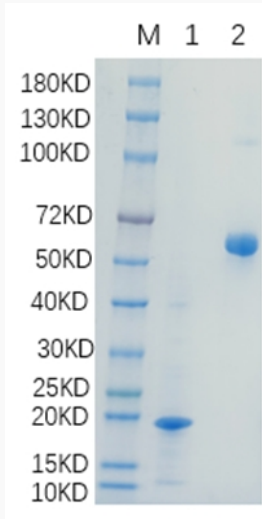
Gene Name	PSEN1 presenilin 1 [Homo sapiens]
Official Symbol	PSEN1
Synonyms	PSEN1; presenilin 1; AD3, Alzheimer disease 3; presenilin-1; FAD; PS1; S182; AD3; PS-1;
Gene ID	5663
mRNA Refseq	NM_000021
Protein Refseq	NP_000012
MIM	104311
UniProt ID	P49768

 Tel: 1-631-559-9269 1-516-512-3133

 Email: info@creative-biomart.com  Fax: 1-631-938-8127

 45-1 Ramsey Road, Shirley, NY 11967, USA

SDS-PAGE



 Tel: 1-631-559-9269 1-516-512-3133

 Email: info@creative-biomart.com  Fax: 1-631-938-8127

 45-1 Ramsey Road, Shirley, NY 11967, USA