

Recombinant Human PSEN1 Protein, MYC/DDK-tagged, C13 and N15-labeled

Cat. No. PSEN1-313H **Lot. No.** (See product label)

SPECIFICATION

Product Overview	PSEN1 MS Standard C13 and N15-labeled recombinant protein (NP_000012) with a C-terminal MYC/DDK tag, was expressed in HEK293 cells.
Species	Human
Source	HEK293
Description	<p>Alzheimer's disease (AD) patients with an inherited form of the disease carry mutations in the presenilin proteins (PSEN1; PSEN2) or in the amyloid precursor protein (APP). These disease-linked mutations result in increased production of the longer form of amyloid-beta (main component of amyloid deposits found in AD brains). Presenilins are postulated to regulate APP processing through their effects on gamma-secretase, an enzyme that cleaves APP. Also, it is thought that the presenilins are involved in the cleavage of the Notch receptor, such that they either directly regulate gamma-secretase activity or themselves are protease enzymes. Several alternatively spliced transcript variants encoding different isoforms have been identified for this gene, the full-length nature of only some have been determined. [provided by RefSeq, Aug 2008]</p>
Molecular Mass	52.5 kDa
AA Sequence	MTELPAPLSYFQNAQMSEDNHLSNTVRSQNDNRERQEHNDRRSLGHPEPLSNGRP QGNSRQVVEQDEEEDLTLKYGAKHVIMLFVPVTLKVVVVVATIKSVSFYTRKDGQ

 Tel: 1-631-559-9269 1-516-512-3133

 Email: info@creative-biomart.com  Fax: 1-631-938-8127

 45-1 Ramsey Road, Shirley, NY 11967, USA

LIYTPFTEDTETVGQRALHSILNAAIMISVIVVMTILLVVLYKYRCYKVIHAWLISSLLLL
 FFFSFIYLGGEVFKTYNVAVDYITVALLIWNFGVVGMISIHWKGPLRLQQAYLIMISALM
 ALVFIKYLPEWTAWLILAVISVYDLVAVLCPKGPLRMLVETAQERNETLFPALIYSSTM
 VWLVNMAEGDPEAQRRVSKNSKYNAESTERESQDTVAENDDGGFSEEWEAQRDS
 HLGPHRSTPESRAAVQELSSSILAGEDPEERGVKLGLGDFIFYSVLVGKASATASGD
 WNTTIACFVAILIGLCLLLLLAIFKKALPALPISITFGLVVFYFATDYLVQPFMDQLAFHQ
 FYITRTRPLEQKLISEEDLAANDILDYKDDDDKV

Purity > 80% as determined by SDS-PAGE and Coomassie blue staining

Stability Stable for 3 months from receipt of products under proper storage and handling conditions.

Storage Store at -80 centigrade. Avoid repeated freeze-thaw cycles.

Concentration 50 µg/mL as determined by BCA

Storage Buffer 100 mM glycine, 25 mM Tris-HCl, pH 7.3.

GENE INFORMATION

Gene Name [PSEN1 presenilin 1 \[Homo sapiens \(human\) \]](#)

Official Symbol [PSEN1](#)

Synonyms PSEN1; presenilin 1; AD3, Alzheimer disease 3; presenilin-1; FAD; PS1; S182; AD3; PS-1;

Gene ID [5663](#)

mRNA Refseq [NM_000021](#)

 Tel: 1-631-559-9269 1-516-512-3133

 Email: info@creative-biomart.com  Fax: 1-631-938-8127

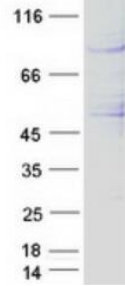
 45-1 Ramsey Road, Shirley, NY 11967, USA

Protein Refseq NP_000012

MIM 104311

UniProt ID P49768

SDS-PAGE



 Tel: 1-631-559-9269 1-516-512-3133

 Email: info@creative-biomart.com  Fax: 1-631-938-8127

 45-1 Ramsey Road, Shirley, NY 11967, USA