

Recombinant Human PSEN2 Over expression Lysate, C-Myc/DDK-tagged

Cat. No. PSEN2-HCL Lot. No. (See product label)

SPECIFICATION

Product Overview

Recombinant Human PSEN2 Over expression Lysate with C-Myc/DDK-tag was expressed in HEK293T.

Species

Human

Source

HEK293

Description

Alzheimer's disease (AD) patients with an inherited form of the disease carry mutations in the presenilin proteins (PSEN1 or PSEN2) or the amyloid precursor protein (APP). These disease-linked mutations result in increased production of the longer form of amyloid-beta (main component of amyloid deposits found in AD brains). Presenilins are postulated to regulate APP processing through their effects on gamma-secretase, an enzyme that cleaves APP. Also, it is thought that the presenilins are involved in the cleavage of the Notch receptor such that, they either directly regulate gamma-secretase activity, or themselves act as protease enzymes. Two alternatively spliced transcript variants encoding different isoforms of PSEN2 have been identified.

Molecular Mass

50.1 kDa

Storage

Upon receiving, store the sample at -20 centigrade. Avoid repeated freeze-thaw cycles after reconstitution. Lysate samples are stable for 12 months from date of receipt when stored at -20 centigrade.

 Tel: 1-631-559-9269 1-516-512-3133

 Email: info@creative-biomart.com  Fax: 1-631-938-8127

 45-1 Ramsey Road, Shirley, NY 11967, USA

Reconstitution Lysate samples can be reconstituted with SDS Sample Buffer.

Shipping The lysate can be shipped at ambient temperature.

GENE INFORMATION

Gene Name PSEN2 presenilin 2 [Homo sapiens (human)]

Official Symbol PSEN2

Synonyms PSEN2; presenilin 2; AD4; PS2; AD3L; STM2; CMD1V; presenilin-2; AD3LP; AD5; Alzheimer disease 3-like; Alzheimer disease 4; E5-1; PS-2; STM-2; EC 3.4.23.-

Gene ID 5664

mRNA Refseq NM_012486

Protein Refseq NP_036618

MIM 600759

UniProt ID P49810

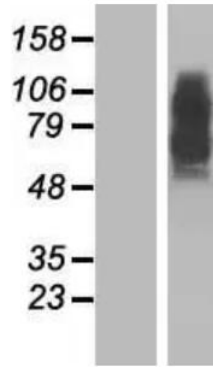
 Tel: 1-631-559-9269 1-516-512-3133

 Email: info@creative-biomart.com  Fax: 1-631-938-8127

 45-1 Ramsey Road, Shirley, NY 11967, USA



WB



Tel: 1-631-559-9269 1-516-512-3133

Email: info@creative-biomart.com Fax: 1-631-938-8127

45-1 Ramsey Road, Shirley, NY 11967, USA