

Recombinant Human PSG3 Protein, Myc/DDK-tagged, C13 and N15-labeled

Cat. No. PSG3-5934H **Lot. No.** (See product label)

SPECIFICATION

Product Overview	PSG3 MS Standard C13 and N15-labeled recombinant protein (NP_066296) with a C-terminal MYC/DDK tag, was expressed in HEK293 cells.
Species	Human
Source	HEK293
Description	<p>The human pregnancy-specific glycoproteins (PSGs) are a family of proteins that are synthesized in large amounts by placental trophoblasts and released into the maternal circulation during pregnancy. Molecular cloning and analysis of several PSG genes has indicated that the PSGs form a subgroup of the carcinoembryonic antigen (CEA) gene family, which belongs to the immunoglobulin superfamily of genes.</p> <p>Members of the CEA family consist of a single N domain, with structural similarity to the immunoglobulin variable domains, followed by a variable number of immunoglobulin constant-like A and/or B domains. Most PSGs have an arg-gly-asp (RGD) motif, which has been shown to function as an adhesion recognition signal for several integrins, in the N-terminal domain. For additional general information about the PSG gene family.</p>
Molecular Mass	47.9 kDa
AA Sequence	MGPLSAPPCTQRITWKGLLLTALLLNFWNLPTTAQVTIEAEPTKVSKGKDVLLLVHNL PQNLAGYIWYKGQMKDLYHYITSYVVDGQIIYGPAYSGRETVYSNASLLIQNVTRD

 Tel: 1-631-559-9269 1-516-512-3133

 Email: info@creative-biomart.com  Fax: 1-631-938-8127

 45-1 Ramsey Road, Shirley, NY 11967, USA

AGSYTLHIVKRGDGTTRGETGHFTFTLYLETPKPSISSSNLYPREDMEAVSLTCDPET
 PDASYLWWMNGQSLPMTTHSLQLSKNKRTLFLFGVTKYTAGPYECEIRNPVSASRSD
 PVTLNLLPKLPKYITINNLNPRENKDVLAFCEPKSENYTYIWWLNGQSLPVSPRVK
 RPIENRILILPSVTRNETGPYQCEIQDRYGGIRSYPVTLNVLYGPDLPRIYPSFTYYHS
 GENLYLSCFADSNPPAEYSWTINGKFQLSGQKLFIPQITTKHSGLYACSVRNSATGM
 ESSKSMTVEVSAPSGTGHLPLGNPLTRTRPLEQKLISEEDLAANDILDYKDDDDKV

Purity	> 80% as determined by SDS-PAGE and Coomassie blue staining
Stability	Stable for 3 months from receipt of products under proper storage and handling conditions.
Storage	Store at -80 centigrade. Avoid repeated freeze-thaw cycles.
Concentration	50 µg/mL as determined by BCA
Storage Buffer	100 mM glycine, 25 mM Tris-HCl, pH 7.3.

GENE INFORMATION

Gene Name	PSG3 pregnancy specific beta-1-glycoprotein 3 [Homo sapiens (human)]
Official Symbol	PSG3
Synonyms	PSG3; pregnancy specific beta-1-glycoprotein 3; pregnancy-specific beta-1-glycoprotein 3; PSBG-3; PS-beta-G-3; carcinoembryonic antigen SG5; pregnancy-specific glycoprotein 3;
Gene ID	5671
mRNA Refseq	NM_021016

 Tel: 1-631-559-9269 1-516-512-3133

 Email: info@creative-biomart.com  Fax: 1-631-938-8127

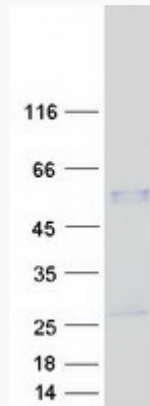
 45-1 Ramsey Road, Shirley, NY 11967, USA

Protein Refseq NP_066296

MIM 176392

UniProt ID Q16557

SDS-PAGE



 Tel: 1-631-559-9269 1-516-512-3133

 Email: info@creative-biomart.com  Fax: 1-631-938-8127

 45-1 Ramsey Road, Shirley, NY 11967, USA