

Recombinant Human PSG3 Protein (Gln35-Leu428), C-His tagged

Cat. No. PSG3-6026H Lot. No. (See product label)

SPECIFICATION

Product Overview	Recombinant human PSG3 (Gln35-Leu428) fused with the C-terminal His tag was expressed in mammalian cells.
Species	Human
Source	Mammalian Cells
ProteinLength	Gln35-Leu428
Form	Lyophilized powder/frozen liquid
Molecular Mass	43.34 kDa
Purity	> 90 % as determined by SDS-PAGE
Notes	For research use only.
Storage	Use a manual defrost freezer and avoid repeated freeze thaw cycles. Store at 2 to 8 centigrade for one week. Store at -20 to -80 centigrade for twelve months from the date of receipt.
Storage Buffer	Supplied as solution form in PBS or lyophilized from PBS.
Reconstitution	Reconstitute in sterile water for a stock solution.

 Tel: 1-631-559-9269 1-516-512-3133

 Email: info@creative-biomart.com  Fax: 1-631-938-8127

 45-1 Ramsey Road, Shirley, NY 11967, USA

Shipping They are shipped out with dry ice/blue ice unless customers require otherwise.

GENE INFORMATION

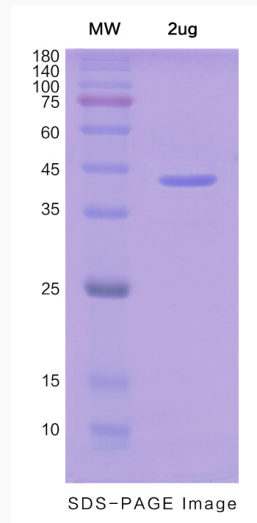
Gene Name	PSG3 pregnancy specific beta-1-glycoprotein 3 [Homo sapiens (human)]
Official Symbol	PSG3
Synonyms	PSG3; pregnancy specific beta-1-glycoprotein 3; pregnancy-specific beta-1-glycoprotein 3; PSBG-3; PS-beta-G-3; carcinoembryonic antigen SG5; pregnancy-specific glycoprotein 3;
Gene ID	5671
mRNA Refseq	NM_021016
Protein Refseq	NP_066296
MIM	176392
UniProt ID	Q16557

 Tel: 1-631-559-9269 1-516-512-3133

 Email: info@creative-biomart.com  Fax: 1-631-938-8127

 45-1 Ramsey Road, Shirley, NY 11967, USA

SDS-PAGE



 Tel: 1-631-559-9269 1-516-512-3133

 Email: info@creative-biomart.com  Fax: 1-631-938-8127

 45-1 Ramsey Road, Shirley, NY 11967, USA