

Recombinant Human proteasome 20S subunit alpha 1 Protein, His tagged

Cat. No. PSMA1-001H **Lot. No.** (See product label)

SPECIFICATION

Product Overview	Recombinant Human PSMA1 Protein (16-263aa) with His tag was expressed in E. coli.
Species	Human
Source	E.coli
ProteinLength	16-263aa
Description	<p>The proteasome is a multicatalytic proteinase complex with a highly ordered ring-shaped 20S core structure. The core structure is composed of 4 rings of 28 non-identical subunits; 2 rings are composed of 7 alpha subunits and 2 rings are composed of 7 beta subunits. Proteasomes are distributed throughout eukaryotic cells at a high concentration and cleave peptides in an ATP/ubiquitin-dependent process in a non-lysosomal pathway. An essential function of a modified proteasome, the immunoproteasome, is the processing of class I MHC peptides. This gene encodes a member of the peptidase T1A family, that is a 20S core alpha subunit. Alternative splicing results in multiple transcript variants encoding distinct isoforms.</p>
Tag	N-His
Molecular Mass	29 kDa
AA Sequence	MHHHHHHHHQGRHQIEYAMEAVKQGSATVGLKSKTHAVLVALKRAQSELAHQK

 Tel: 1-631-559-9269 1-516-512-3133

 Email: info@creative-biomart.com  Fax: 1-631-938-8127

 45-1 Ramsey Road, Shirley, NY 11967, USA

ILHVDNHIGISIAGLTADARLLCNFMRQECLDSRFVFDRLPVSRLVSLIGSKTQIPTQ
 RYGRRPYGVGLLIAGYDDMGPHIFQTCPSANYFDCRAMSIGARSQSARTYLERHMS
 EFMECNLNELVKHGLRALRETLPAEQDLTTKNVSIGIVGKDLEFTIYDDDDVSPFLEG
 LEERPQRKAQPAQPADEPAEKADPEMEH

Endotoxin < 1 EU/μg by LAL

Purity > 90% by SDS-PAGE

Storage Store it under sterile conditions at -20 to -80 centigrade. It is recommended that the protein be aliquoted for optimal storage. Avoid repeated freeze-thaw cycles.

Storage Buffer Sterile PBS, pH8.0

Concentration 1 mg/mL by BCA

GENE INFORMATION

Gene Name [PSMA1 proteasome 20S subunit alpha 1 \[Homo sapiens \(human\) \]](#)

Official Symbol [PSMA1](#)

Synonyms PSMA1; proteasome (prosome, macropain) subunit, alpha type, 1; proteasome subunit alpha type-1; HC2; MGC1667; MGC14542; MGC14575; MGC14751; MGC21459; MGC22853; MGC23915; NU; PROS30; PROS-30; protein P30-33K; proteasome nu chain; macropain subunit C2; macropain subunit nu; proteasome subunit nu; 30 kDa prosomal protein; proteasome component C2; proteasome subunit, alpha-type, 1; multicatalytic endopeptidase complex subunit C2

Gene ID [5682](#)

 Tel: 1-631-559-9269 1-516-512-3133

 Email: info@creative-biomart.com  Fax: 1-631-938-8127

 45-1 Ramsey Road, Shirley, NY 11967, USA

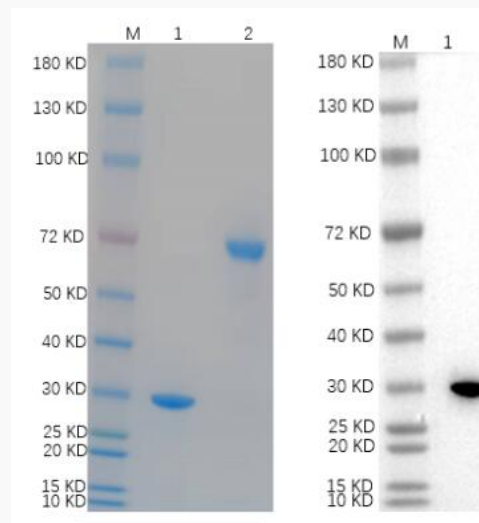
mRNA Refseq [NM_001143937](#)

Protein Refseq [NP_001137409](#)

MIM [602854](#)

UniProt ID [P25786](#)

Reducing 4%-20%
SDS-PAGE (CBB
stained) and WB
(Anti-His Mouse
Monoclonal
antibody) analysis
profiles of purified
PSMA1.



1. PSMA1
2. BSA

 Tel: 1-631-559-9269 1-516-512-3133

 Email: info@creative-biomart.com  Fax: 1-631-938-8127

 45-1 Ramsey Road, Shirley, NY 11967, USA