

Recombinant Full Length Human Proteasome (Prosome, Macropain) Subunit, Alpha Type, 3, His-tagged

Cat. No. PSMA3-1287H Lot. No. (See product label)

SPECIFICATION

Product Overview	Recombinant human PSMA3 protein, fused to His-tag at N-terminus, was expressed in E.coli and purified by using conventional chromatography techniques.
Species	Human
Source	Human
ProteinLength	1-255 a.a.
Description	The proteasome is a multicatalytic proteinase complex with a highly ordered ring-shaped 20S core structure. The core structure is composed of 4 rings of 28 non-identical subunits; 2 rings are composed of 7 alpha subunits and 2 rings are composed of 7 beta subunits. Proteasomes are distributed throughout eukaryotic cells at a high concentration and cleave peptides in an ATP/ubiquitin-dependent process in a non-lysosomal pathway. This gene encodes a member of the peptidase T1A family that is a 20S core alpha subunit. Two alternative transcripts encoding different isoforms have been identified.
Form	Liquid. In 20mM Tris-HCl buffer(pH 8.0) containing 10% glycerol, 1mM DTT, 0.15M NaCl.
Molecular Weight	30.6 kDa (275aa), confirmed by MALDI-TOF
Purity	> 95 % by SDS - PAGE

 Tel: 1-631-559-9269 1-516-512-3133

 Email: info@creative-biomart.com  Fax: 1-631-938-8127

 45-1 Ramsey Road, Shirley, NY 11967, USA

Concentration	1 mg/ml (determined by Bradford)
Sequences of amino acids	MGSSHHHHHH SSGLVPRGSH MSSIGTGYDL SASTFSPDGR VFQVEYAMKA VENSSTAIGI RCKDGVVFGV EKLVLKLYE EGSNKRLFNV DRHVGMVAVAG LLADARSLAD IAREEASNFR SNFGYNIPLK HLADRVAMYV HAYTLYSVR PFGCSFMLGS YSVNDGAQLY MIDPSGVSYG YWGCAIGKAR QAAKTEIEKL QMKEMTCRDI VKEVAKIYI VHDEVKDKAF ELELSWVGEL TNGRHEIVPK DIREEAEKYA KESLKEEDES DDDNM
Storage	Can be stored at +4°C short term (1-2 weeks). For long term storage, aliquot and store at -20°C or -70°C. Avoid repeated freezing and thawing cycles.
Pathways	APC/C-mediated degradation of cell cycle proteins; APC/C:Cdc20 mediated degradation of Securin; Cell Cycle; Degradation of beta-catenin by the destruction complex; G1/S DNA Damage Checkpoints
GENE INFORMATION	
Gene Name	PSMA3 proteasome (prosome, macropain) subunit, alpha type, 3 [Homo sapiens]
Official Symbol	PSMA3
Synonyms	PSMA3; proteasome (prosome, macropain) subunit, alpha type, 3; HC8; PSC3; MGC12306; MGC32631; proteasome subunit alpha type-3; OTTHUMP00000179019; macropain subunit C8; proteasome subunit C8; proteasome component C8; multicatalytic endopeptidase complex subunit C8; Proteasome subunit alpha type-3; Macropain subunit C8; Multicatalytic endopeptidase complex subunit C8; Proteasome component C8; EC 3.4.25.1
Gene ID	5684

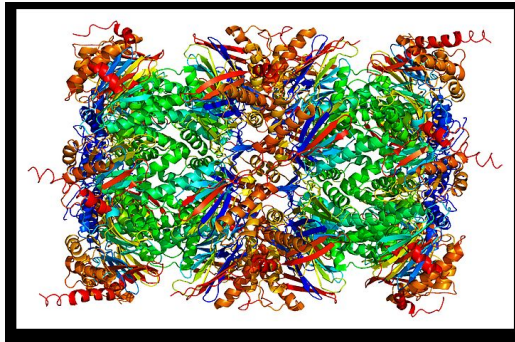
 Tel: 1-631-559-9269 1-516-512-3133

 Email: info@creative-biomart.com  Fax: 1-631-938-8127

 45-1 Ramsey Road, Shirley, NY 11967, USA

mRNA Refseq	NM_002788
Protein Refseq	NP_002779
MIM	176843
UniProt ID	P25788
Chromosome Location	14q23
Function	peptidase activity; protein binding; threonine-type endopeptidase activity

PDB rendering based on 1iru.



 Tel: 1-631-559-9269 1-516-512-3133

 Email: info@creative-biomart.com  Fax: 1-631-938-8127

 45-1 Ramsey Road, Shirley, NY 11967, USA