

Recombinant Human PSMA3 Protein, Myc/DDK-tagged, C13 and N15-labeled

Cat. No. PSMA3-5429H **Lot. No.** (See product label)

SPECIFICATION

Product Overview	PSMA3 MS Standard C13 and N15-labeled recombinant protein (NP_002779) with a C-terminal MYC/DDK tag, was expressed in HEK293 cells.
Species	Human
Source	HEK293
Description	The proteasome is a multicatalytic proteinase complex with a highly ordered ring-shaped 20S core structure. The core structure is composed of 4 rings of 28 non-identical subunits; 2 rings are composed of 7 alpha subunits and 2 rings are composed of 7 beta subunits. Proteasomes are distributed throughout eukaryotic cells at a high concentration and cleave peptides in an ATP/ubiquitin-dependent process in a non-lysosomal pathway. An essential function of a modified proteasome, the immunoproteasome, is the processing of class I MHC peptides. This gene encodes a member of the peptidase T1A family, that is a 20S core alpha subunit. Two alternative transcripts encoding different isoforms have been identified.
Molecular Mass	28.5 kDa
AA Sequence	MSSIGTGYDLSASTFSPDGRVVFQVEYAMKAVENTSSTAIGIRCKDGVVFGVEKLVLSK LYEEGSNKRLFNVDRHVGMVAVAGLLADARSLADMAREEASNFRSNGYNIPLKHLA DRVAMYVHAYTLYSVRPFGCSFMLGYSVNDGAQLYMIDPSGVSYGYWGCAIGK ARQAAKTEIEKLQMKEMTCRDIVKEVAKIIVHDEVKDKAFELELSWVGELTNGRHEI

 Tel: 1-631-559-9269 1-516-512-3133

 Email: info@creative-biomart.com  Fax: 1-631-938-8127

 45-1 Ramsey Road, Shirley, NY 11967, USA

VPKDIREEEAEKYAKESLKEEDESDDDNMSGPTRTRPLEQKLISEEDLAANDILDYKD
DDDKV

Purity > 80% as determined by SDS-PAGE and Coomassie blue staining

Stability Stable for 3 months from receipt of products under proper storage and handling conditions.

Storage Store at -80 centigrade. Avoid repeated freeze-thaw cycles.

Concentration 50 µg/mL as determined by BCA

Storage Buffer 100 mM glycine, 25 mM Tris-HCl, pH 7.3.

GENE INFORMATION

Gene Name [PSMA3 proteasome 20S subunit alpha 3 \[Homo sapiens \(human\) \]](#)

Official Symbol [PSMA3](#)

Synonyms PSMA3; proteasome (prosome, macropain) subunit, alpha type, 3; proteasome subunit alpha type-3; HC8; macropain subunit C8; proteasome subunit C8; proteasome component C8; multicatalytic endopeptidase complex subunit C8; PSC3; MGC12306; MGC32631;

Gene ID [5684](#)

mRNA Refseq [NM_002788](#)

Protein Refseq [NP_002779](#)

 Tel: 1-631-559-9269 1-516-512-3133

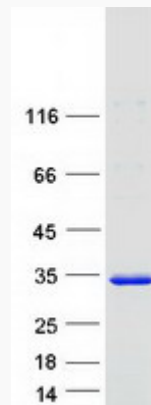
 Email: info@creative-biomart.com  Fax: 1-631-938-8127

 45-1 Ramsey Road, Shirley, NY 11967, USA

MIM 176843

UniProt ID P25788

SDS-PAGE



 Tel: 1-631-559-9269 1-516-512-3133

 Email: info@creative-biomart.com  Fax: 1-631-938-8127

 45-1 Ramsey Road, Shirley, NY 11967, USA