

Recombinant Human Proteasome (prosome, macropain) Subunit, Beta Type, 2, His-tagged

Cat. No. PSMB2-1321H Lot. No. (See product label)

SPECIFICATION

Product Overview	Recombinant human PSMB2 protein, fused to His-tag at N-terminus, was expressed in E.coli and purified by using conventional chromatography techniques.
Species	Human
Source	E.coli
Description	PSMB2 is a member of the proteasome T1B family, which is a 20S core beta subunit. The proteasome is a multicatalytic proteinase complex with a highly ordered ring-shaped 20S core structure. Proteasomes are distributed throughout eukaryotic cells at a high concentration and cleave peptides in an ATP/ubiquitin-dependent process in a non-lysosomal pathway. An essential function of a modified proteasome, the immunoproteasome, is the processing of class I MHC peptides.
Form	Liquid. In 20 mM Tris-HCl buffer (pH 8.0) containing 1 mM DTT, 30% glycerol, 0.1 M NaCl.
Molecular Weight	24.9 kDa (221 aa) confirmed by MALDI-TOF
Purity	>90 % by SDS-PAGE
Concentration	0.5 mg/ml (determined by Bradford assay)
Sequences of amino	MGSSHHHHHH SSGLVPRGSH MEYLIGIQGP DYVLVASDRV AASNIVQMKD

 Tel: 1-631-559-9269 1-516-512-3133

 Email: info@creative-biomart.com  Fax: 1-631-938-8127

 45-1 Ramsey Road, Shirley, NY 11967, USA

acids DHDKMFKMSE KILLLCVGEA GDTVQFAEYI QKNVQLYKMR NGYELSPTAA
 ANFTRRNLD CLRSRTPYHV NLLLAGYDEH EGPALYYMDY LAALAKAPFA
 AHGYGAFLTL SILDRYYTPT ISRERAVELL RKCLEELQKR FILNLPTFSV
 RIIDKNGIHD LDNISFPKQG S

Storage Can be stored at +4°C short term (1-2 weeks). For long term storage, aliquot and store at -20°C or -70°C. Avoid repeated freezing and thawing cycles.

Pathways APC/C-mediated degradation of cell cycle proteins; Adaptive Immunity Signaling; Antigen processing; Apoptosis; Assembly of the pre-replicative complex; Autodegradation of the E3 ubiquitin ligase COP1; Cell Cycle Checkpoints; DNA Replication; G1/S DNA Damage Checkpoints; HIV Infection; G1/S Transition; Immune System; Immunoproteasome; Metabolism of RNA

GENE INFORMATION

Gene Name PSMB2 proteasome (prosome, macropain) subunit, beta type, 2 [Homo sapiens]

Official Symbol PSMB2

Synonyms PSMB2; proteasome (prosome, macropain) subunit, beta type, 2; HC7-I; MGC104215; MGC126885; proteasome subunit beta type-2; OTTHUMP00000004345; macropain subunit C7-I; proteasome beta 2 subunit; proteasome component C7-I; proteasome subunit, beta type, 2; multicatalytic endopeptidase complex subunit C7-1; multicatalytic endopeptidase complex subunit C7-I; NP_001186708.1; EC 3.4.25.1

Gene ID 5690

mRNA Refseq NM_001199779

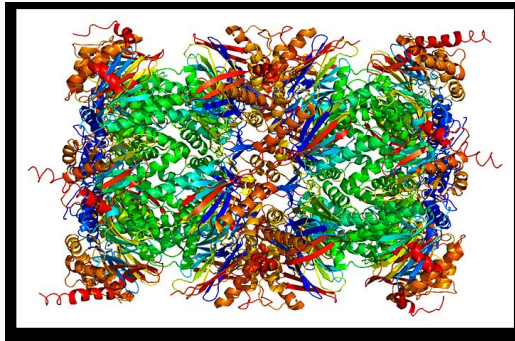
 Tel: 1-631-559-9269 1-516-512-3133

 Email: info@creative-biomart.com  Fax: 1-631-938-8127

 45-1 Ramsey Road, Shirley, NY 11967, USA

Protein Refseq	NP_001186708
MIM	602175
UniProt ID	Q59FJ0
Chromosome Location	1p34.2
Function	peptidase activity; threonine-type endopeptidase activity

PDBrendering based
on 1iru.



 Tel: 1-631-559-9269 1-516-512-3133

 Email: info@creative-biomart.com  Fax: 1-631-938-8127

 45-1 Ramsey Road, Shirley, NY 11967, USA