

## Recombinant Human PSMB2 Protein, Myc/DDK-tagged, C13 and N15-labeled

Cat. No. PSMB2-5083H Lot. No. (See product label)

### SPECIFICATION

#### Product Overview

PSMB2 MS Standard C13 and N15-labeled recombinant protein (NP\_002785) with a C-terminal MYC/DDK tag, was expressed in HEK293 cells.

#### Species

Human

#### Source

HEK293

#### Description

The proteasome is a multicatalytic proteinase complex with a highly ordered ring-shaped 20S core structure. The core structure is composed of 4 rings of 28 non-identical subunits; 2 rings are composed of 7 alpha subunits and 2 rings are composed of 7 beta subunits. Proteasomes are distributed throughout eukaryotic cells at a high concentration and cleave peptides in an ATP/ubiquitin-dependent process in a non-lysosomal pathway. An essential function of a modified proteasome, the immunoproteasome, is the processing of class I MHC peptides. This gene encodes a member of the proteasome B-type family, also known as the T1B family, that is a 20S core beta subunit. Multiple alternatively spliced transcript variants encoding distinct isoforms have been found for this gene.

#### Molecular Mass

22.8 kDa

#### AA Sequence

MEYLIGIQGPDYVLVASDRVAASNIVQMKDDHDKMFKMSEKILLLCVGEAGDTVQFA  
EYIQKNVQLYKMRNGYELSPTAAANFTRRNLADCLRSRTPYHVNLLLAGYDEHEGP  
ALYYMDYLAALAKAPFAAHGYGAFLTLSILDRIYPTISRERAVELLRKCLEELQKRFI

 Tel: 1-631-559-9269 1-516-512-3133

 Email: [info@creative-biomart.com](mailto:info@creative-biomart.com)  Fax: 1-631-938-8127

 45-1 Ramsey Road, Shirley, NY 11967, USA



LNLPTFSVRIIDKNGIHDLDNISFPKQGSTRTRPLEQKLISEEDLAANDILDYKDDDDK  
V

**Purity** > 80% as determined by SDS-PAGE and Coomassie blue staining

**Stability** Stable for 3 months from receipt of products under proper storage and handling conditions.

**Storage** Store at -80 centigrade. Avoid repeated freeze-thaw cycles.

**Concentration** 50 µg/mL as determined by BCA

**Storage Buffer** 100 mM glycine, 25 mM Tris-HCl, pH 7.3.

## GENE INFORMATION

**Gene Name** PSMB2 proteasome 20S subunit beta 2 [ Homo sapiens (human) ]

**Official Symbol** PSMB2

**Synonyms** PSMB2; proteasome (prosome, macropain) subunit, beta type, 2; proteasome subunit beta type-2; HC7 I; macropain subunit C7-I; proteasome beta 2 subunit; proteasome component C7-I; proteasome subunit, beta type, 2; multicatalytic endopeptidase complex subunit C7-1; multicatalytic endopeptidase complex subunit C7-I; HC7-I; MGC104215; MGC126885;

**Gene ID** 5690

**mRNA Refseq** NM\_002794

**Protein Refseq** NP\_002785

Tel: 1-631-559-9269 1-516-512-3133

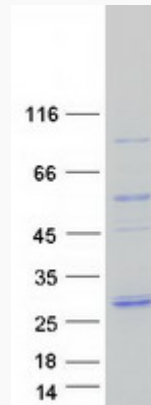
Email: [info@creative-biomart.com](mailto:info@creative-biomart.com) Fax: 1-631-938-8127

45-1 Ramsey Road, Shirley, NY 11967, USA

**MIM** 602175

**UniProt ID** P49721

**SDS-PAGE**



 Tel: 1-631-559-9269 1-516-512-3133

 Email: [info@creative-biomart.com](mailto:info@creative-biomart.com)  Fax: 1-631-938-8127

 45-1 Ramsey Road, Shirley, NY 11967, USA