

Recombinant Human PSMB8 Protein (Thr75-Ser261), N-His tagged

Cat. No. PSMB8-6033H Lot. No. (See product label)

SPECIFICATION

Product Overview	Recombinant human PSMB8 (Thr75-Ser261) fused with the N-His tag was expressed in E. coli.
Species	Human
Source	E.coli
ProteinLength	Thr75-Ser261
Form	Lyophilized powder/frozen liquid
Molecular Mass	23.00 kDa
Purity	> 90 % as determined by SDS-PAGE
Notes	For research use only.
Storage	Use a manual defrost freezer and avoid repeated freeze thaw cycles. Store at 2 to 8 centigrade for one week. Store at -20 to -80 centigrade for twelve months from the date of receipt.
Storage Buffer	0.01M PBS, pH 7.4, 0.02 % NLS
Reconstitution	Reconstitute in sterile water for a stock solution.

 Tel: 1-631-559-9269 1-516-512-3133

 Email: info@creative-biomart.com  Fax: 1-631-938-8127

 45-1 Ramsey Road, Shirley, NY 11967, USA

Shipping They are shipped out with dry ice/blue ice unless customers require otherwise.

GENE INFORMATION

Gene Name [PSMB8 proteasome 20S subunit beta 8 \[Homo sapiens \(human\) \]](#)

Official Symbol [PSMB8](#)

Synonyms

PSMB8; proteasome (prosome, macropain) subunit, beta type, 8 (large multifunctional peptidase 7); LMP7, proteasome (prosome, macropain) subunit, beta type, 8 (large multifunctional protease 7); proteasome subunit beta type-8; beta5i; D6S216E; PSMB5i; RING10; macropain subunit C13; proteasome subunit Y2; protease component C13; proteasome component C13; proteasome-related gene 7; proteasome subunit beta 5i; low molecular mass protein 7; low molecular weight protein 7; proteasome catalytic subunit 3i; really interesting new gene 10 protein; multicatalytic endopeptidase complex subunit C13; JMP; ALDD; LMP7; NKJO; D6S216; MGC1491;

Gene ID [5696](#)

mRNA Refseq [NM_004159](#)

Protein Refseq [NP_004150](#)

MIM [177046](#)

UniProt ID [P28062](#)

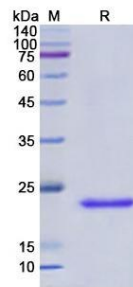
 Tel: 1-631-559-9269 1-516-512-3133

 Email: info@creative-biomart.com  Fax: 1-631-938-8127

 45-1 Ramsey Road, Shirley, NY 11967, USA



SDS-PAGE



Tel: 1-631-559-9269 1-516-512-3133

Email: info@creative-biomart.com Fax: 1-631-938-8127

45-1 Ramsey Road, Shirley, NY 11967, USA