

Recombinant Human PSMB9 Protein, His-tagged

Cat. No. PSMB9-467H Lot. No. (See product label)

SPECIFICATION

Product Overview Recombinant Human PSMB9(Thr22~Asp218) fused with His tag at N-terminal was expressed in E. coli.

Species Human

Source E.coli

ProteinLength Thr22~Asp218

Description The proteasome is a multicatalytic proteinase complex with a highly ordered ring-shaped 20S core structure. The core structure is composed of 4 rings of 28 non-identical subunits; 2 rings are composed of 7 alpha subunits and 2 rings are composed of 7 beta subunits. Proteasomes are distributed throughout eukaryotic cells at a high concentration and cleave peptides in an ATP/ubiquitin-dependent process in a non-lysosomal pathway. An essential function of a modified proteasome, the immunoproteasome, is the processing of class I MHC peptides. This gene encodes a member of the proteasome B-type family, also known as the T1B family, that is a 20S core beta subunit. This gene is located in the class II region of the MHC (major histocompatibility complex). Expression of this gene is induced by gamma interferon and this gene product replaces catalytic subunit 1 (proteasome beta 6 subunit) in the immunoproteasome. Proteolytic processing is required to generate a mature subunit.

Form PBS, pH7.4, containing 0.01% SKL, 1mM DTT, 5% Trehalose and Proclin300.

 Tel: 1-631-559-9269 1-516-512-3133

 Email: info@creative-biomart.com  Fax: 1-631-938-8127

 45-1 Ramsey Road, Shirley, NY 11967, USA

Molecular Mass	24.7kDa
Identity	Reconstitute in PBS or others
Endotoxin	<1.0EU per 1g (determined by the LAL method)
Purity	> 95%
Applications	Positive Control; Immunogen; SDS-PAGE; WB. If bio-activity of the protein is needed, please check active protein
Stability	The thermal stability is described by the loss rate. The loss rate was determined by accelerated thermal degradation test, that is, incubate the protein at 37 centigrade for 48h, and no obvious degradation and precipitation were observed. The loss rate is less than 5% within the expiration date under appropriate storage condition.
Storage	Avoid repeated freeze/thaw cycles. Store at 2-8 centigrade for one month. Aliquot and store at -80 centigrade for 12 months.
Reconstitution	Reconstitute in PBS or others
GENE INFORMATION	
Gene Name	PSMB9 proteasome (prosome, macropain) subunit, beta type, 9 (large multifunctional peptidase 2) [Homo sapiens]
Official Symbol	PSMB9
Synonyms	PSMB9; proteasome (prosome, macropain) subunit, beta type, 9 (large multifunctional peptidase 2); LMP2, proteasome (prosome, macropain) subunit, beta type, 9 (large multifunctional protease 2); proteasome subunit beta type-9; beta1i;

 Tel: 1-631-559-9269 1-516-512-3133

 Email: info@creative-biomart.com  Fax: 1-631-938-8127

 45-1 Ramsey Road, Shirley, NY 11967, USA

PSMB6i; RING12; macropain chain 7; proteasome chain 7; proteasome-related gene 2; proteasome subunit beta 6i; proteasome subunit beta-1i; low molecular mass protein 2; proteasome catalytic subunit 1i; really interesting new gene 12 protein; multicatalytic endopeptidase complex chain 7; LMP2; MGC70470;

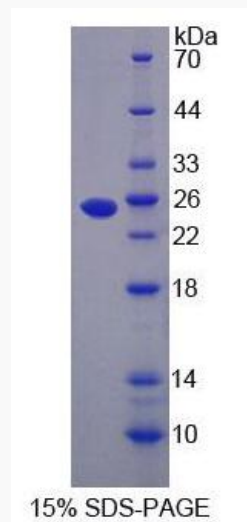
Gene ID [5698](#)


mRNA Refseq [NM_002800](#)

Protein Refseq [NP_002791](#)

MIM [177045](#)

UniProt ID [P28065](#)



 Tel: 1-631-559-9269 1-516-512-3133

 Email: info@creative-biomart.com  Fax: 1-631-938-8127

 45-1 Ramsey Road, Shirley, NY 11967, USA