

Recombinant Human PSMC5 Protein, Myc/DDK-tagged, C13 and N15-labeled

Cat. No. PSMC5-6105H Lot. No. (See product label)

SPECIFICATION

Product Overview

PSMC5 MS Standard C13 and N15-labeled recombinant protein (NP_002796) with a C-terminal MYC/DDK tag, was expressed in HEK293 cells.

Species

Human

Source

HEK293

Description

The 26S proteasome is a multicatalytic proteinase complex with a highly ordered structure composed of 2 complexes, a 20S core and a 19S regulator. The 20S core is composed of 4 rings of 28 non-identical subunits; 2 rings are composed of 7 alpha subunits and 2 rings are composed of 7 beta subunits. The 19S regulator is composed of a base, which contains 6 ATPase subunits and 2 non-ATPase subunits, and a lid, which contains up to 10 non-ATPase subunits. Proteasomes are distributed throughout eukaryotic cells at a high concentration and cleave peptides in an ATP/ubiquitin-dependent process in a non-lysosomal pathway. An essential function of a modified proteasome, the immunoproteasome, is the processing of class I MHC peptides. This gene encodes one of the ATPase subunits, a member of the triple-A family of ATPases which have a chaperone-like activity. In addition to participation in proteasome functions, this subunit may participate in transcriptional regulation since it has been shown to interact with the thyroid hormone receptor and retinoid X receptor-alpha. Two transcript variants encoding different isoforms have been found for this gene.

 Tel: 1-631-559-9269 1-516-512-3133

 Email: info@creative-biomart.com  Fax: 1-631-938-8127

 45-1 Ramsey Road, Shirley, NY 11967, USA

| | |
|-----------------------|---------------------------------------------------------------------------------------------------------------------------------------------------------------------------------------------------------------------------------------------------------------------------------------------------------------------------------------------------------------------------------------------------------------------------------------------------------------------------------|
| Molecular Mass | 45.6 kDa |
| AA Sequence | MALDGPEQMELEEGKAGSGLRQYYLSKIEELQLIVNDKSQNLRRLLQAQRNELNAKV RLLREELQLLQEQGSYVGEVVRAMDKKKVVLKVHPEGKFVVDVDKNIDINDVTPNC RVALRNDSTLHKILPNKVDPLVSLMMVEKVPDSTYEMIGGLDKQIKEIKEVIELPVKH PELFEALGIAQPKGVLLYGPPGTGKTLARAVAHHTDCTFIRVSGSELVQKFIGEGAR MVRELFVMAREHAPSIIFMDEIDSIGSSRLEGGSGGDSEVQRTMLELLNQLDGFAT KNIKVIMATNRIDILDSALLRPGRIDRKIEFPPPNEEARLDILKIHRSKMNLTRGINLRKI AELMPGASGAEVKGVCTEAGMYALRERRVHVTQEDFEMAVAKVMQKDSEKNMSIK KLWKTRTRPLEQKLISEEDLAANDILDYKDDDDKV |
| Purity | > 80% as determined by SDS-PAGE and Coomassie blue staining |
| Stability | Stable for 3 months from receipt of products under proper storage and handling conditions. |
| Storage | Store at -80 centigrade. Avoid repeated freeze-thaw cycles. |
| Concentration | 50 µg/mL as determined by BCA |
| Storage Buffer | 100 mM glycine, 25 mM Tris-HCl, pH 7.3. |

GENE INFORMATION

| | |
|------------------------|------------------------------------------------------------------------------------------------------------------------------------------------------------------------------------------------------------------------------------------|
| Gene Name | PSMC5 proteasome 26S subunit, ATPase 5 [Homo sapiens (human)] |
| Official Symbol | PSMC5 |
| Synonyms | PSMC5; proteasome (prosome, macropain) 26S subunit, ATPase, 5; 26S protease regulatory subunit 8; p45; p45/SUG; S8; SUG 1; SUG1; TBP10; TRIP1; MSUG1 protein; proteasome subunit p45; thyroid receptor interactor 1; Tat-binding protein |

 Tel: 1-631-559-9269 1-516-512-3133

 Email: info@creative-biomart.com  Fax: 1-631-938-8127

 45-1 Ramsey Road, Shirley, NY 11967, USA

homolog 10; proteasome 26S ATPase subunit 5; proteasome 26S subunit ATPase 5; 26S proteasome AAA-ATPase subunit RPT6; thyroid hormone receptor-interacting protein 1; SUG-1;

Gene ID [5705](#)

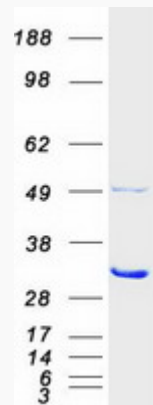
mRNA Refseq [NM_002805](#)

Protein Refseq [NP_002796](#)

MIM [601681](#)

UniProt ID [P62195](#)

SDS-PAGE



 Tel: 1-631-559-9269 1-516-512-3133

 Email: info@creative-biomart.com  Fax: 1-631-938-8127

 45-1 Ramsey Road, Shirley, NY 11967, USA