

Recombinant Human PSMD10 Protein, Myc/DDK-tagged, C13 and N15-labeled

Cat. No. PSMD10-2742H Lot. No. (See product label)

SPECIFICATION

Product Overview	PSMD10 MS Standard C13 and N15-labeled recombinant protein (NP_736606) with a C-terminal MYC/DDK tag, was expressed in HEK293 cells.
Species	Human
Source	HEK293
Description	This gene encodes a subunit of the PA700/19S complex, which is the regulatory component of the 26S proteasome. The 26S proteasome complex is required for ubiquitin-dependent protein degradation. This protein is a non-ATPase subunit that may be involved in protein-protein interactions. Aberrant expression of this gene may play a role in tumorigenesis. Two transcripts encoding different isoforms have been described. Pseudogenes have been identified on chromosomes 3 and 20.
Molecular Mass	16 kDa
AA Sequence	MEGCVSNLMVCNLAYSGKLEELKESILADKSLATRTDQDSRTALHWACSAGHTEIVE FLLQLGVPVNDKDDAGWSPLHIAASAGRDEIVKALLGKGAQVNAVQNQNGCTPLHYA ASKNRHEIAVMLLEGGANPDAKDHYEATAMHRAAAKDTTRTRPLEQKLISEEDLAAN DILDYKDDDDKV
Purity	> 80% as determined by SDS-PAGE and Coomassie blue staining
Stability	Stable for 3 months from receipt of products under proper storage and handling

 Tel: 1-631-559-9269 1-516-512-3133

 Email: info@creative-biomart.com  Fax: 1-631-938-8127

 45-1 Ramsey Road, Shirley, NY 11967, USA

conditions.

Storage Store at -80 centigrade. Avoid repeated freeze-thaw cycles.

Concentration 50 µg/mL as determined by BCA

Storage Buffer 100 mM glycine, 25 mM Tris-HCl, pH 7.3.

GENE INFORMATION

Gene Name [PSMD10 proteasome 26S subunit, non-ATPase 10 \[Homo sapiens \(human\) \]](#)

Official Symbol [PSMD10](#)

Synonyms PSMD10; proteasome (prosome, macropain) 26S subunit, non-ATPase, 10; 26S proteasome non-ATPase regulatory subunit 10; gankyrin; p28; ankyrin repeat protein; 26S proteasome regulatory subunit p28; hepatocellular carcinoma-associated protein p28-II; p28(GANK); dJ889N15.2;

Gene ID [5716](#)

mRNA Refseq [NM_170750](#)

Protein Refseq [NP_736606](#)

MIM [603480](#)

UniProt ID [O75832](#)

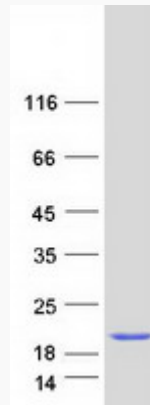
 Tel: 1-631-559-9269 1-516-512-3133

 Email: info@creative-biomart.com  Fax: 1-631-938-8127

 45-1 Ramsey Road, Shirley, NY 11967, USA



SDS-PAGE



Tel: 1-631-559-9269 1-516-512-3133

Email: info@creative-biomart.com Fax: 1-631-938-8127

45-1 Ramsey Road, Shirley, NY 11967, USA