

Recombinant Human PSMD10 Protein (Met1-Gly226), N-His tagged

Cat. No. PSMD10-6051H Lot. No. (See product label)

SPECIFICATION

Product Overview	Recombinant human PSMD10 (Met1-Gly226) fused with the N-His tag was expressed in E. coli.
Species	Human
Source	E.coli
ProteinLength	Met1-Gly226
Form	Lyophilized powder/frozen liquid
Molecular Mass	26.74 kDa
Purity	> 90 % as determined by SDS-PAGE
Notes	For research use only.
Storage	Use a manual defrost freezer and avoid repeated freeze thaw cycles. Store at 2 to 8 centigrade for one week. Store at -20 to -80 centigrade for twelve months from the date of receipt.
Storage Buffer	Lyophilized from PBS, pH 7.4, 0.02 % NLS, 1 mM EDTA, 4 % trehalose, 1 % mannitol.

 Tel: 1-631-559-9269 1-516-512-3133

 Email: info@creative-biomart.com  Fax: 1-631-938-8127

 45-1 Ramsey Road, Shirley, NY 11967, USA

Reconstitution Reconstitute in sterile water for a stock solution.

Shipping They are shipped out with dry ice/blue ice unless customers require otherwise.

GENE INFORMATION

Gene Name PSMD10 proteasome (prosome, macropain) 26S subunit, non-ATPase, 10 [Homo sapiens (human)]

Official Symbol PSMD10

Synonyms PSMD10; proteasome (prosome, macropain) 26S subunit, non-ATPase, 10; 26S proteasome non-ATPase regulatory subunit 10; gankyrin; p28; ankyrin repeat protein; 26S proteasome regulatory subunit p28; hepatocellular carcinoma-associated protein p28-II; p28 (GANK); dJ889N15.2;

Gene ID 5716

mRNA Refseq NM_002814

Protein Refseq NP_002805

MIM 603480

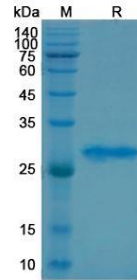
UniProt ID O75832

 Tel: 1-631-559-9269 1-516-512-3133

 Email: info@creative-biomart.com  Fax: 1-631-938-8127

 45-1 Ramsey Road, Shirley, NY 11967, USA

SDS-PAGE



 Tel: 1-631-559-9269 1-516-512-3133

 Email: info@creative-biomart.com  Fax: 1-631-938-8127

 45-1 Ramsey Road, Shirley, NY 11967, USA