

Recombinant Human PSMD14 Protein, Myc/DDK-tagged, C13 and N15-labeled

Cat. No. PSMD14-6158H **Lot. No.** (See product label)

SPECIFICATION

Product Overview	PSMD14 MS Standard C13 and N15-labeled recombinant protein (NP_005796) with a C-terminal MYC/DDK tag, was expressed in HEK293 cells.
Species	Human
Source	HEK293
Description	This gene encodes a component of the 26S proteasome. The 26S proteasome is a large multiprotein complex that catalyzes the degradation of ubiquitinated intracellular proteins. The encoded protein is a component of the 19S regulatory cap complex of the 26S proteasome and mediates substrate deubiquitination. A pseudogene of this gene is also located on the long arm of chromosome 2.
Molecular Mass	34.6 kDa
AA Sequence	MDRLLRLGGGMPGLGQGPPTDAPAVDTAEQVYISSLALLKMLKHGRAGVPMVMG LMLGEFVDDYTVRVIDVFAMPQSGTGVSVEAVDPVFQAKMLDMLKQTGRPEMVVG WYHSHPGFGCWLSGVDINTQQSFEALSERAVAVVVDPIQSVKGVVIDAFRLINANM MVLGHEPRQTTSNLGHLNKPSIQALIHGLNRHYYSITINYRKNELEQKMLLNHLHKSW MEGLTLQDYSEHCKHNESVVKEMLELAKNYNKAVEEEDKMTPEQLAIKNVGKQDPK RHLEEHVDVLMTSNIVQCLAAMLDTVVFKTRTRPLEQKLISEEDLAANDILDYKDDDD KV
Purity	> 80% as determined by SDS-PAGE and Coomassie blue staining

 Tel: 1-631-559-9269 1-516-512-3133

 Email: info@creative-biomart.com  Fax: 1-631-938-8127

 45-1 Ramsey Road, Shirley, NY 11967, USA

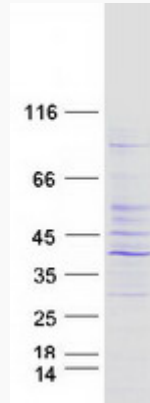
Stability	Stable for 3 months from receipt of products under proper storage and handling conditions.
Storage	Store at -80 centigrade. Avoid repeated freeze-thaw cycles.
Concentration	50 µg/mL as determined by BCA
Storage Buffer	100 mM glycine, 25 mM Tris-HCl, pH 7.3.
GENE INFORMATION	
Gene Name	PSMD14 proteasome 26S subunit, non-ATPase 14 [Homo sapiens (human)]
Official Symbol	PSMD14
Synonyms	PSMD14; proteasome (prosome, macropain) 26S subunit, non-ATPase, 14; 26S proteasome non-ATPase regulatory subunit 14; pad1; POH1; Rpn11; 26S proteasome regulatory subunit rpn11; 26S proteasome-associated PAD1 homolog 1; PAD1; RPN11;
Gene ID	10213
mRNA Refseq	NM_005805
Protein Refseq	NP_005796
MIM	607173
UniProt ID	O00487

 Tel: 1-631-559-9269 1-516-512-3133

 Email: info@creative-biomart.com  Fax: 1-631-938-8127

 45-1 Ramsey Road, Shirley, NY 11967, USA

SDS-PAGE



 Tel: 1-631-559-9269 1-516-512-3133

 Email: info@creative-biomart.com  Fax: 1-631-938-8127

 45-1 Ramsey Road, Shirley, NY 11967, USA