

## Recombinant Human PSME2 protein, GST-tagged

Cat. No. PSME2-5156H Lot. No. (See product label)

### SPECIFICATION

<b>Product Overview</b>	Recombinant Human PSME2 protein(Q9UL46)(2-239aa), fused to N-terminal GST tag, was expressed in E. coli.
<b>Species</b>	Human
<b>Source</b>	E.coli
<b>ProteinLength</b>	2-239aa
<b>Form</b>	If the delivery form is liquid, the default storage buffer is Tris/PBS-based buffer, 5%-50% glycerol. If the delivery form is lyophilized powder, the buffer before lyophilization is Tris/PBS-based buffer, 6% Trehalose, pH 8.0.
<b>Molecular Mass</b>	54.3 kDa
<b>Purity</b>	Greater than 90% as determined by SDS-PAGE.
<b>Storage</b>	Store at -20°C/-80°C upon receipt, aliquoting is necessary for mutiple use. Avoid repeated freeze-thaw cycles.
<b>Reconstitution</b>	Please reconstitute protein in deionized sterile water to a concentration of 0.1-1.0 mg/mL. We recommend to add 5-50% of glycerol (final concentration) and aliquot for long-term storage at -20°C/-80°C. Our default final concentration of glycerol is 50%.

 Tel: 1-631-559-9269 1-516-512-3133

 Email: [info@creative-biomart.com](mailto:info@creative-biomart.com)  Fax: 1-631-938-8127

 45-1 Ramsey Road, Shirley, NY 11967, USA

## GENE INFORMATION

**Gene Name** PSME2 proteasome (prosome, macropain) activator subunit 2 (PA28 beta) [ Homo sapiens ]

**Official Symbol** PSME2

**Synonyms** PSME2; proteasome (prosome, macropain) activator subunit 2 (PA28 beta); proteasome activator complex subunit 2; PA28beta; REG-beta; MCP activator, 31-kD subunit; proteasome activator 28-beta; 11S regulator complex beta subunit; 11S regulator complex subunit beta; cell migration-inducing protein 22; proteasome activator 28 subunit beta; proteasome activator hPA28 subunit beta; activator of multicatalytic protease subunit 2; PA28B; REGbeta;

**Gene ID** 5721

**mRNA Refseq** NM\_002818

**Protein Refseq** NP\_002809

**MIM** 602161

**UniProt ID** Q9UL46

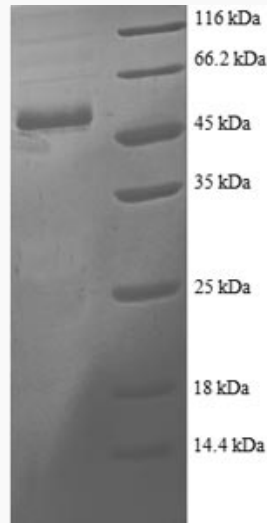
 Tel: 1-631-559-9269 1-516-512-3133

 Email: [info@creative-biomart.com](mailto:info@creative-biomart.com)  Fax: 1-631-938-8127

 45-1 Ramsey Road, Shirley, NY 11967, USA



SDS-PAGE



Tel: 1-631-559-9269 1-516-512-3133

Email: [info@creative-biomart.com](mailto:info@creative-biomart.com) Fax: 1-631-938-8127

45-1 Ramsey Road, Shirley, NY 11967, USA