

# Recombinant Full Length Human PSME3 Protein, C-Flag-tagged

Cat. No. PSME3-1977HFL Lot. No. (See product label)

## SPECIFICATION

### Product Overview

Recombinant Full Length Human PSME3 Protein, fused to Flag-tag at C-terminus, was expressed in Mammalian cells.

### Species

Human

### Source

Mammalian Cells

### Description

The 26S proteasome is a multicatalytic proteinase complex with a highly ordered structure composed of 2 complexes, a 20S core and a 19S regulator. The 20S core is composed of 4 rings of 28 non-identical subunits; 2 rings are composed of 7 alpha subunits and 2 rings are composed of 7 beta subunits. The 19S regulator is composed of a base, which contains 6 ATPase subunits and 2 non-ATPase subunits, and a lid, which contains up to 10 non-ATPase subunits. Proteasomes are distributed throughout eukaryotic cells at a high concentration and cleave peptides in an ATP/ubiquitin-dependent process in a non-lysosomal pathway. An essential function of a modified proteasome, the immunoproteasome, is the processing of class I MHC peptides. The immunoproteasome contains an alternate regulator, referred to as the 11S regulator or PA28, that replaces the 19S regulator. Three subunits (alpha, beta and gamma) of the 11S regulator have been identified. This gene encodes the gamma subunit of the 11S regulator. Six gamma subunits combine to form a homohexameric ring. Alternate splicing results in multiple transcript variants.

### Form

25 mM Tris HCl, pH 7.3, 100 mM glycine, 10% glycerol.

 Tel: 1-631-559-9269 1-516-512-3133

 Email: [info@creative-biomart.com](mailto:info@creative-biomart.com)  Fax: 1-631-938-8127

 45-1 Ramsey Road, Shirley, NY 11967, USA

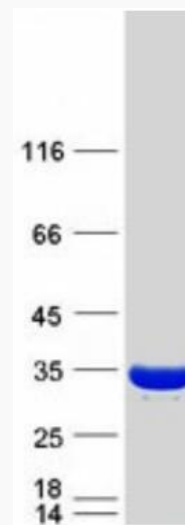
<b>Molecular Mass</b>	29.3 kDa
<b>AA Sequence</b>	MASLLKVDQEVLKLVDSFRERITSEAEDLVANFFPKLLELDSFLKEPILNIHDLTQIHS DMNLPVPDPI LLTNSHDGLDGPTYKKRRLDECEEFQGTQKVFVMPNGMLKSNQQL VDIIEKVKPEIRLLIEKCNTVKMWV QLLIPRIEDGNNFGVSIQEETVAELRTVESEAAS YLDQISRYITRAKLVSKIAYPHVEDYRRTVTEID EKEYISLRLIISELRNQYVTLHDM ILKNIEKIKRPRSSNAETLY TRTRPLEQKLISEEDLAANDILDYKDDDDKV
<b>Purity</b>	> 80% as determined by SDS-PAGE and Coomassie blue staining.
<b>Stability</b>	Stable for 12 months from the date of receipt of the product under proper storage and handling conditions. Avoid repeated freeze-thaw cycles.
<b>Storage</b>	Store at -80 centigrade.
<b>Concentration</b>	>50 ug/mL as determined by microplate BCA method.
<b>Preparation</b>	Recombinant protein was captured through anti-DDK affinity column followed by conventional chromatography steps.
<b>Protein Families</b>	Stem cell - Pluripotency
<b>Protein Pathways</b>	Antigen processing and presentation, Proteasome
<b>Full Length</b>	Full L.
<b>GENE INFORMATION</b>	
<b>Gene Name</b>	PSME3 proteasome activator subunit 3 [ Homo sapiens (human) ]
<b>Official Symbol</b>	PSME3

 Tel: 1-631-559-9269 1-516-512-3133

 Email: [info@creative-biomart.com](mailto:info@creative-biomart.com)  Fax: 1-631-938-8127

 45-1 Ramsey Road, Shirley, NY 11967, USA

<b>Synonyms</b>	Ki; PA28G; HEL-S-283; PA28gamma; REG-GAMMA; PA28-gamma
<b>Gene ID</b>	10197
<b>mRNA Refseq</b>	NM_005789.4
<b>Protein Refseq</b>	NP_005780.2
<b>MIM</b>	605129
<b>UniProt ID</b>	P61289



Coomassie blue staining of purified PSME3 protein.

 Tel: 1-631-559-9269 1-516-512-3133

 Email: [info@creative-biomart.com](mailto:info@creative-biomart.com)  Fax: 1-631-938-8127

 45-1 Ramsey Road, Shirley, NY 11967, USA