

## Recombinant Human PSME3 protein, His-tagged

Cat. No. PSME3-359H Lot. No. (See product label)

### SPECIFICATION

<b>Product Overview</b>	Recombinant Human PSME3 (Met1-Tyr254) protein was fused to His-tag at N-terminus and expressed in E.coli.
<b>Species</b>	Human
<b>Source</b>	E.coli
<b>ProteinLength</b>	Met1-Tyr254
<b>Description</b>	<p>Proteasome activator complex subunit 3 (PSME3), a member of the PA28 family, is also known as 11S regulator complex subunit gamma (REG-gamma), activator of multicatalytic protease subunit 3 and proteasome activator 28 subunit gamma (PA28gamma). PSME3 activates the trypsin-like catalytic subunit of the proteasome but inhibits the chymotrypsin-like and postglutamyl-preferring (PGPH) subunits. PSME3 can also facilitate the MDM2-p53/TP53 interaction which promotes ubiquitination- and MDM2-dependent proteasomal degradation of p53/TP53, limiting its accumulation and resulting in inhibited apoptosis after DNA damage. Furthermore, PSME3 may also be involved in cell cycle regulation.</p>
<b>Predicted N Terminal</b>	Met1
<b>Form</b>	Lyophilized from 0.22 µm filtered solution in 50 mM Tris, 150 mM NaCl, pH7.5, 10% trehalose.
<b>Molecular Mass</b>	The protein has a calculated MW of 30.3 kDa. The protein migrates as 28-33 kDa

 Tel: 1-631-559-9269 1-516-512-3133

 Email: [info@creative-biomart.com](mailto:info@creative-biomart.com)  Fax: 1-631-938-8127

 45-1 Ramsey Road, Shirley, NY 11967, USA

	under reducing (R) condition (SDS-PAGE).
<b>Endotoxin</b>	Less than 1.0 EU per µg by the LAL method.
<b>Purity</b>	>95% as determined by SDS-PAGE.
<b>Storage</b>	<p>For long term storage, the product should be stored at lyophilized state at -20 centigrade or lower.</p> <p>Please avoid repeated freeze-thaw cycles.</p> <p>This product is stable after storage at:</p> <p>-20 to -70 centigrade for 12 months in lyophilized state;</p> <p>-70 centigrade for 3 months under sterile conditions after reconstitution.</p>
<b>Reconstitution</b>	It is recommended that sterile water be added to the vial to prepare a stock solution of 0.2 ug/ul. Centrifuge the vial at 4°C before opening to recover the entire contents.

## GENE INFORMATION

<b>Gene Name</b>	PSME3
<b>Official Symbol</b>	PSME3
<b>Synonyms</b>	<p>PSME3; proteasome (prosome, macropain) activator subunit 3 (PA28 gamma; Ki); proteasome activator complex subunit 3; Ki; PA28 gamma; PA28G; REG GAMMA; PA28gamma; Ki antigen; Ki nuclear autoantigen; proteasome activator 28-gamma; 11S regulator complex gamma subunit; 11S regulator complex subunit gamma; proteasome activator 28 subunit gamma; activator of multicatalytic protease subunit 3; REG-GAMMA; PA28-gamma</p>
<b>Gene ID</b>	10197

 Tel: 1-631-559-9269 1-516-512-3133

 Email: [info@creative-biomart.com](mailto:info@creative-biomart.com)  Fax: 1-631-938-8127

 45-1 Ramsey Road, Shirley, NY 11967, USA

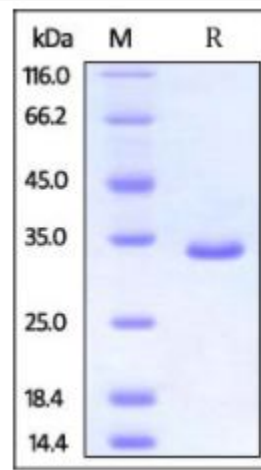
mRNA Refseq [NM\\_005789](#)

Protein Refseq [NP\\_005780](#)

MIM [605129](#)

UniProt ID [P61289](#)

**SDS-PAGE of  
PSME3-359H**



Human PSME3, His Tag on SDS-PAGE under reducing (R) condition. The gel was stained overnight with Coomassie Blue. The purity of the protein is greater than 95%.

 Tel: 1-631-559-9269 1-516-512-3133

 Email: [info@creative-biomart.com](mailto:info@creative-biomart.com)  Fax: 1-631-938-8127

 45-1 Ramsey Road, Shirley, NY 11967, USA