

Recombinant Human PSME3 protein, His&Myc-tagged

Cat. No. PSME3-5333H Lot. No. (See product label)

SPECIFICATION

Product Overview	Recombinant Human PSME3 protein(P61289)(2-254aa), fused with N-terminal His tag and C-terminal Myc tag, was expressed in E.coli.
Species	Human
Source	E.coli
ProteinLength	2-254aa
Form	If the delivery form is liquid, the default storage buffer is Tris/PBS-based buffer, 5%-50% glycerol. If the delivery form is lyophilized powder, the buffer before lyophilization is Tris/PBS-based buffer, 6% Trehalose, pH 8.0.
Molecular Mass	36.8 kDa
Purity	Greater than 90% as determined by SDS-PAGE.
Storage	Store at -20°C/-80°C upon receipt, aliquoting is necessary for mutiple use. Avoid repeated freeze-thaw cycles.
Reconstitution	We recommend that this vial be briefly centrifuged prior to opening to bring the contents to the bottom. Please reconstitute protein in deionized sterile water to a concentration of 0.1-1.0 mg/mL.We recommend to add 5-50% of glycerol (final concentration) and aliquot for long-term storage at -20°C/-80°C.

 Tel: 1-631-559-9269 1-516-512-3133

 Email: info@creative-biomart.com  Fax: 1-631-938-8127

 45-1 Ramsey Road, Shirley, NY 11967, USA

AA Sequence

ASLLKVDQEVKLVDSFRERITSEAEDLVANFFPKLLELDSFLKEPILNIHDLTQIHSD
 MNLPVPDPILLTNSHDGLDGPTYKKRRLDECEEFQGTKVVFVMPNGMLKSNQQLVD
 IIEKVKPEIRLLIEKCNTVKMWVQLLIPRIEDGNNFGVSIQEETVAELRTVESEAASYLD
 QISRYYITRAKLVSKIAPHYVEDYRRTVTEIDEKEYISLRLLIISELRNQYVTLHDMILKN
 IEKIKRPRSSNAETLY

GENE INFORMATION

Gene Name PSME3 proteasome (prosome, macropain) activator subunit 3 (PA28 gamma; Ki) [Homo sapiens]

Official Symbol PSME3

Synonyms PSME3; proteasome (prosome, macropain) activator subunit 3 (PA28 gamma; Ki); proteasome activator complex subunit 3; Ki; PA28 gamma; PA28G; REG GAMMA; PA28gamma; Ki antigen; Ki nuclear autoantigen; proteasome activator 28-gamma; 11S regulator complex gamma subunit; 11S regulator complex subunit gamma; proteasome activator 28 subunit gamma; activator of multicatalytic protease subunit 3; REG-GAMMA; PA28-gamma;

Gene ID 10197

mRNA Refseq NM_005789

Protein Refseq NP_005780

MIM 605129

UniProt ID P61289

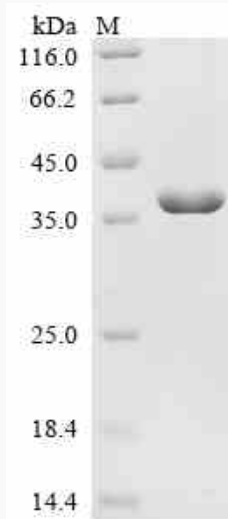
 Tel: 1-631-559-9269 1-516-512-3133

 Email: info@creative-biomart.com  Fax: 1-631-938-8127

 45-1 Ramsey Road, Shirley, NY 11967, USA



SDS-PAGE



Tel: 1-631-559-9269 1-516-512-3133

Email: info@creative-biomart.com Fax: 1-631-938-8127

45-1 Ramsey Road, Shirley, NY 11967, USA