

## Recombinant Human PSME3 protein, His-GST-tagged

Cat. No. PSME3-644H Lot. No. (See product label)

### SPECIFICATION

<b>Product Overview</b>	Recombinant Human PSME3 protein(P61289)(2-252aa), fused with N-terminal His and GST tag, was expressed in E.coli.
<b>Species</b>	Human
<b>Source</b>	E.coli
<b>ProteinLength</b>	2-252aa
<b>Form</b>	If the delivery form is liquid, the default storage buffer is Tris/PBS-based buffer, 5%-50% glycerol. If the delivery form is lyophilized powder, the buffer before lyophilization is Tris/PBS-based buffer, 6% Trehalose, pH 8.0.
<b>Molecular Mass</b>	60.6 kDa
<b>Purity</b>	Greater than 85% as determined by SDS-PAGE.
<b>Storage</b>	Store at -20°C/-80°C upon receipt, aliquoting is necessary for mutiple use. Avoid repeated freeze-thaw cycles.
<b>Reconstitution</b>	We recommend that this vial be briefly centrifuged prior to opening to bring the contents to the bottom. Please reconstitute protein in deionized sterile water to a concentration of 0.1-1.0 mg/mL. We recommend to add 5-50% of glycerol (final concentration) and aliquot for long-term storage at -20°C/-80°C.

 Tel: 1-631-559-9269 1-516-512-3133

 Email: [info@creative-biomart.com](mailto:info@creative-biomart.com)  Fax: 1-631-938-8127

 45-1 Ramsey Road, Shirley, NY 11967, USA

**AA Sequence**

ASLLKVDQEVKLVDSFRERITSEAEDLVANFFPKLLELDSFLKEPILNIHDLTQIHSD  
 MNLPVPDPILLTNSHDGLDGPTYKKRRLDECEEFQGTKVFMVPMNGMLKSNQQLVD  
 IIEKVKPEIRLLIEKCNTVKMWVQLLIPRIEDGNNFGVSIQEETVAELRTVESEAASYLD  
 QISRYYITRAKLVSKIAKYPHVEDYRRTVTEIDEKEYISLRLLIISELRNQYVTLHDMILKN  
 IEKIKRPRSSNAET

## GENE INFORMATION

**Gene Name** PSME3 proteasome (prosome, macropain) activator subunit 3 (PA28 gamma; Ki) [ Homo sapiens ]

**Official Symbol** PSME3

**Synonyms** PSME3; proteasome (prosome, macropain) activator subunit 3 (PA28 gamma; Ki); proteasome activator complex subunit 3; Ki; PA28 gamma; PA28G; REG GAMMA; PA28gamma; Ki antigen; Ki nuclear autoantigen; proteasome activator 28-gamma; 11S regulator complex gamma subunit; 11S regulator complex subunit gamma; proteasome activator 28 subunit gamma; activator of multicatalytic protease subunit 3; REG-GAMMA; PA28-gamma;

**Gene ID** 10197

**mRNA Refseq** NM\_005789

**Protein Refseq** NP\_005780

**MIM** 605129

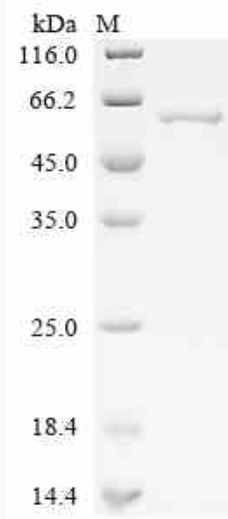
**UniProt ID** P61289

 Tel: 1-631-559-9269 1-516-512-3133

 Email: [info@creative-biomart.com](mailto:info@creative-biomart.com)  Fax: 1-631-938-8127

 45-1 Ramsey Road, Shirley, NY 11967, USA

**SDS-PAGE**



 Tel: 1-631-559-9269 1-516-512-3133

 Email: [info@creative-biomart.com](mailto:info@creative-biomart.com)  Fax: 1-631-938-8127

 45-1 Ramsey Road, Shirley, NY 11967, USA