

Recombinant Human PSPN Protein, His tagged

Cat. No. PSPN-001H Lot. No. (See product label)

SPECIFICATION

Product Overview	Recombinant Human PSPN Protein with His tag was expressed in E. coli.
Species	Human
Source	E.coli
ProteinLength	22-156 aa
Description	<p>This gene encodes a secreted ligand of the GDNF (glial cell line-derived neurotrophic factor) subfamily and TGF-beta (transforming growth factor-beta) superfamily of proteins. The encoded preproprotein is proteolytically processed to generate the mature protein. This protein signals through the RET receptor tyrosine kinase and a GPI-linked coreceptor, and promotes survival of neuronal populations. This protein may play a role in cell death, and nervous system development and function. Elevated expression of this gene has been observed in oral squamous cell carcinoma.</p>
Tag	His
Molecular Mass	15.4 kDa
AA Sequence	<p>MHHHHHHWGPDARGVPVADGEFSSEQVAKAGGTWLGTHRPLARLRRALSGPCQL WSLTLSVAELGLGYASEEKVIFRYCAGSCPRGARTQHGLALARLQGQGRAHGGPC CRPTRYTDVAFLDDRHRWQRLPQLSAAACGCGG</p>

 Tel: 1-631-559-9269 1-516-512-3133

 Email: info@creative-biomart.com  Fax: 1-631-938-8127

 45-1 Ramsey Road, Shirley, NY 11967, USA

Endotoxin	<2 EU/μg by LAL
Purity	> 85% by SDS-PAGE
Storage	Store it under sterile conditions at -20 centigrade to -80 centigrade. It is recommended that the protein be aliquoted for optimal storage. Avoid repeated freeze-thaw cycles.
Storage Buffer	Sterile PBS, pH7.4
Concentration	1 mg/mL

GENE INFORMATION

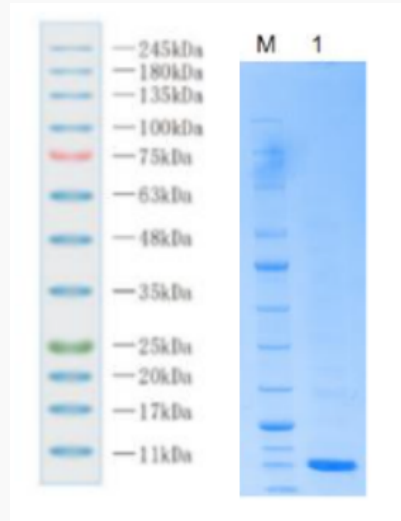
Gene Name	PSPN persephin [Homo sapiens (human)]
Official Symbol	PSPN
Synonyms	PSPN; persephin; PSP;
Gene ID	5623
mRNA Refseq	NM_004158
Protein Refseq	NP_004149
MIM	602921
UniProt ID	O60542

 Tel: 1-631-559-9269 1-516-512-3133

 Email: info@creative-biomart.com  Fax: 1-631-938-8127

 45-1 Ramsey Road, Shirley, NY 11967, USA

**Reducing 4%-20%
SDS-PAGE (CBB
stained) analysis
profile of purified
PSPN.**



 Tel: 1-631-559-9269 1-516-512-3133

 Email: info@creative-biomart.com  Fax: 1-631-938-8127

 45-1 Ramsey Road, Shirley, NY 11967, USA