

Recombinant Human PSPN Protein, His/GST-tagged

Cat. No. PSPN-361H Lot. No. (See product label)

SPECIFICATION

Product Overview	Recombinant Human PSPN(Val29~Gly156) fused with His/GST tag at N-terminal was expressed in E. coli.
Species	Human
Source	E.coli
ProteinLength	Val29~Gly156
Description	<p>This gene encodes a secreted ligand of the GDNF (glial cell line-derived neurotrophic factor) subfamily and TGF-beta (transforming growth factor-beta) superfamily of proteins. The encoded preproprotein is proteolytically processed to generate the mature protein. This protein signals through the RET receptor tyrosine kinase and a GPI-linked coreceptor, and promotes survival of neuronal populations. This protein may play a role in cell death, and nervous system development and function. Elevated expression of this gene has been observed in oral squamous cell carcinoma.</p>
Form	PBS, pH7.4, containing 0.01% SKL, 1mM DTT, 5% Trehalose and Proclin300.
Molecular Mass	43.7kDa
Endotoxin	<1.0EU per 1ug (determined by the LAL method)
Purity	> 95%

 Tel: 1-631-559-9269 1-516-512-3133

 Email: info@creative-biomart.com  Fax: 1-631-938-8127

 45-1 Ramsey Road, Shirley, NY 11967, USA

Applications	Positive Control; Immunogen; SDS-PAGE; WB. If bio-activity of the protein is needed, please check active protein
Stability	The thermal stability is described by the loss rate. The loss rate was determined by accelerated thermal degradation test, that is, incubate the protein at 37 centigrade for 48h, and no obvious degradation and precipitation were observed. The loss rate is less than 5% within the expiration date under appropriate storage condition.
Storage	Avoid repeated freeze/thaw cycles. Store at 2-8 centigrade for one month. Aliquot and store at -80 centigrade for 12 months.
Reconstitution	Reconstitute in PBS or others

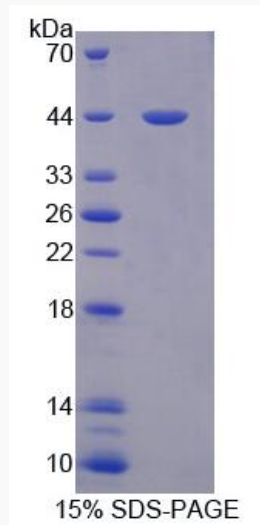
GENE INFORMATION

Gene Name	PSPN persephin [Homo sapiens]
Official Symbol	PSPN
Synonyms	PSPN; persephin; PSP;
Gene ID	5623
mRNA Refseq	NM_004158
Protein Refseq	NP_004149
MIM	602921
UniProt ID	O60542

 Tel: 1-631-559-9269 1-516-512-3133

 Email: info@creative-biomart.com  Fax: 1-631-938-8127

 45-1 Ramsey Road, Shirley, NY 11967, USA



Tel: 1-631-559-9269 1-516-512-3133

Email: info@creative-biomart.com Fax: 1-631-938-8127

45-1 Ramsey Road, Shirley, NY 11967, USA