

## Recombinant Human PTBP1 Protein, His-tagged

Cat. No. PTBP1-2042H Lot. No. (See product label)

### SPECIFICATION

<b>Product Overview</b>	Recombinant Human PTBP1 Protein(1-370 aa), fused with His tag, was expressed in E.coli.
<b>Species</b>	Human
<b>Source</b>	E.coli
<b>ProteinLength</b>	1-370 aa
<b>Form</b>	The purified protein was Lyophilized from sterile PBS (58mM Na <sub>2</sub> HPO <sub>4</sub> , 17mM NaH <sub>2</sub> PO <sub>4</sub> , 68mM NaCl, pH7.4). 5 % trehalose and 5 % mannitol are added as protectant before lyophilization. The elution buffer contain 300mM imidazole.
<b>Purity</b>	85%, by SDS-PAGE with Coomassie Brilliant Blue staining.
<b>Storage</b>	Short-term storage: Store at 2-8°C for (1-2 weeks). Long-term storage: Aliquot and store at -20°C to -80°C for up to 3 months, buffer containing 50% glycerol is recommended for reconstitution. Avoid repeat freeze-thaw cycles.
<b>Reconstitution</b>	Reconstitute at 0.25 g/μl in 200 μl sterile water for short-term storage. Reconstitution with 200 μl 50% glycerol solution is recommended for longer term storage.

### GENE INFORMATION

 Tel: 1-631-559-9269 1-516-512-3133

 Email: [info@creative-biomart.com](mailto:info@creative-biomart.com)  Fax: 1-631-938-8127

 45-1 Ramsey Road, Shirley, NY 11967, USA

<b>Gene Name</b>	PTBP1 polypyrimidine tract binding protein 1 [ Homo sapiens ]
<b>Official Symbol</b>	PTBP1
<b>Synonyms</b>	PTBP1; polypyrimidine tract binding protein 1; polypyrimidine tract binding protein (heterogeneous nuclear ribonucleoprotein I) , PTB; polypyrimidine tract-binding protein 1; heterogeneous nuclear ribonucleoprotein I; HNRNP I; HNRPI; pPTB; PTB 1; PTB2; PTB3; PTB4; hnRNP I; RNA-binding protein; 57 kDa RNA-binding protein PPTB-1; heterogeneous nuclear ribonucleoprotein polypeptide I; polypyrimidine tract binding protein (heterogeneous nuclear ribonucleoprotein I); PTB; PTB-1; PTB-T; HNRNPI; HNRNP-I; MGC8461; MGC10830;
<b>Gene ID</b>	5725
<b>mRNA Refseq</b>	NM_002819
<b>Protein Refseq</b>	NP_002810
<b>MIM</b>	600693
<b>UniProt ID</b>	P26599

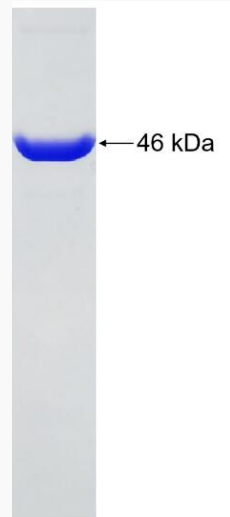
 Tel: 1-631-559-9269 1-516-512-3133

 Email: [info@creative-biomart.com](mailto:info@creative-biomart.com)  Fax: 1-631-938-8127

 45-1 Ramsey Road, Shirley, NY 11967, USA



SDS-PAGE



Tel: 1-631-559-9269 1-516-512-3133

Email: [info@creative-biomart.com](mailto:info@creative-biomart.com) Fax: 1-631-938-8127

45-1 Ramsey Road, Shirley, NY 11967, USA