

# Recombinant Human PTCD2 Protein, Myc/DDK-tagged, C13 and N15-labeled

Cat. No. PTCD2-5189H Lot. No. (See product label)

## SPECIFICATION

<b>Product Overview</b>	PTCD2 MS Standard C13 and N15-labeled recombinant protein (NP_079030) with a C-terminal MYC/DDK tag, was expressed in HEK293 cells.
<b>Species</b>	Human
<b>Source</b>	HEK293
<b>Description</b>	PTCD2 (Pentatricopeptide Repeat Domain 2) is a Protein Coding gene. Diseases associated with PTCD2 include Leigh Syndrome and Mitochondrial Metabolism Disease.
<b>Molecular Mass</b>	43.8 kDa
<b>AA Sequence</b>	MVRDSMAAAFRPSNRVLLQALQILVYPGVGGSGSVSCRCPLGAKRYLLTDNVVKLKEFQKKVAVACNLSGKETYFRNLKKKLTQNKLILKGELITLLHLCESRDHVELAKNVIYRYHAENKNFTLGEYKFGPLFVRLCYELDLEESAVELMKDQHRLRGFFSDSTSFNILMDMLFIKGYKSALQVLIEMKNQDVKFTKDTYVLAFAICYKLNSPESFKICTTLREEALLKGEILSRASCFAVALALNQNEMAKAVSIFSQIMNPESIACINLNIIHIQSNMLELIKTLKNAAEGNLSKFVKRHVFSEEVLAQVREKVKDVPALVAKFDEIYGTLHITGQVTTDSLDAVLCHTPRDRKSHSTLLLNRKMSRRTFQPLSQSLLAETRTRPLEQKLISEEDLAANDILDYKDDDDKV
<b>Purity</b>	> 80% as determined by SDS-PAGE and Coomassie blue staining

 Tel: 1-631-559-9269 1-516-512-3133

 Email: [info@creative-biomart.com](mailto:info@creative-biomart.com)  Fax: 1-631-938-8127

 45-1 Ramsey Road, Shirley, NY 11967, USA

<b>Stability</b>	Stable for 3 months from receipt of products under proper storage and handling conditions.
<b>Storage</b>	Store at -80 centigrade. Avoid repeated freeze-thaw cycles.
<b>Concentration</b>	50 µg/mL as determined by BCA
<b>Storage Buffer</b>	100 mM glycine, 25 mM Tris-HCl, pH 7.3.

## GENE INFORMATION

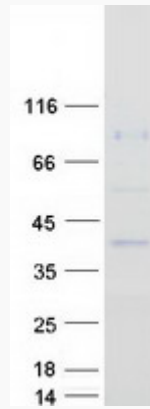
<b>Gene Name</b>	PTCD2 pentatricopeptide repeat domain 2 [ Homo sapiens (human) ]
<b>Official Symbol</b>	PTCD2
<b>Synonyms</b>	PTCD2; pentatricopeptide repeat domain 2; pentatricopeptide repeat-containing protein 2; FLJ12598;
<b>Gene ID</b>	79810
<b>mRNA Refseq</b>	NM_024754
<b>Protein Refseq</b>	NP_079030
<b>MIM</b>	615484
<b>UniProt ID</b>	Q8WV60

 Tel: 1-631-559-9269 1-516-512-3133

 Email: [info@creative-biomart.com](mailto:info@creative-biomart.com)  Fax: 1-631-938-8127

 45-1 Ramsey Road, Shirley, NY 11967, USA

**SDS-PAGE**



 Tel: 1-631-559-9269 1-516-512-3133

 Email: [info@creative-biomart.com](mailto:info@creative-biomart.com)  Fax: 1-631-938-8127

 45-1 Ramsey Road, Shirley, NY 11967, USA