

Recombinant Human PTCH1 Protein (Glu122-Leu249), N-His tagged

Cat. No. PTCH1-6056H Lot. No. (See product label)

SPECIFICATION

Product Overview	Recombinant human PTCH1 (Glu122-Leu249) fused with the N-His tag was expressed in E. coli.
Species	Human
Source	E.coli
ProteinLength	Glu122-Leu249
Form	Lyophilized powder/frozen liquid
Molecular Mass	17.13 kDa
Purity	> 90 % as determined by SDS-PAGE
Notes	For research use only.
Storage	Use a manual defrost freezer and avoid repeated freeze thaw cycles. Store at 2 to 8 centigrade for one week. Store at -20 to -80 centigrade for twelve months from the date of receipt.
Storage Buffer	0.01M PBS, pH 7.4, 0.02 % NLS
Reconstitution	Reconstitute in sterile water for a stock solution.

 Tel: 1-631-559-9269 1-516-512-3133

 Email: info@creative-biomart.com  Fax: 1-631-938-8127

 45-1 Ramsey Road, Shirley, NY 11967, USA

Shipping They are shipped out with dry ice/blue ice unless customers require otherwise.

GENE INFORMATION

Gene Name [PTCH1 patched 1 \[Homo sapiens \(human\) \]](#)

Official Symbol [PTCH1](#)

Synonyms PTCH1; patched 1; NBCCS, patched (Drosophila) homolog, patched homolog (Drosophila), patched homolog 1 (Drosophila), PTCH; protein patched homolog 1; BCNS; PTCH protein +4; PTCH protein -10; PTCH protein +12b; patched homolog 1; PTCH protein -3, 4, 5; PTC; HPE7; PTC1; PTCH; NBCCS; PTCH11; FLJ26746; FLJ42602;

Gene ID [5727](#)

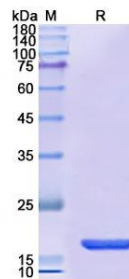
mRNA Refseq [NM_001083605](#)

Protein Refseq [NP_001077074](#)

MIM [601309](#)

UniProt ID [Q13635](#)

SDS-PAGE



 Tel: 1-631-559-9269 1-516-512-3133

 Email: info@creative-biomart.com  Fax: 1-631-938-8127

 45-1 Ramsey Road, Shirley, NY 11967, USA