

Recombinant Human PTGES2 protein, GST-tagged

Cat. No. PTGES2-2045H Lot. No. (See product label)

SPECIFICATION

Product Overview Recombinant Human PTGES2 protein(1-377 aa), fused with N-terminal GST tag, was expressed in E.coli.

Species Human

Source E.coli

ProteinLength 1-377 aa

Form The purified protein was lyophilized from sterile phosphate-buffered saline (PBS: 58 mM Na₂HPO₄, 17 mM NaH₂PO₄, 68 mM NaCl, pH 8.0). Prior to lyophilization, 5% (w/v) trehalose and 5% (w/v) mannitol were incorporated as cryoprotective excipients. The protein was eluted with a buffer containing 100 mM reduced glutathione (GSH).

AASequence

MDPAARVVRALWPGGCALAWRLGGRPQPLLPTQSRAGFAGAAGGSPVAAARKG
 SPRLLGAAALALGGALGLYHTARWHLRAQDLHAERSAAQLSLSSRLQLTLYQYKTC
 PFC SKVRAFLDFHALPYQVVEVNPVRRAEIKFSSYRKVPILVAQEGESSQQLNDSSVI
 ISALKTYLVSGQPLEEIIITYYPAMKAVNEQGKEVTEFGNKYWLMLNEKEAQQVYGGK
 EARTEEMKWRQWADDWLVLHISP NVYRTPTEALASFDYIVREGKFGAVEGAVAKY
 MGAAAMY LISKRLKSRHRLQDNVREDLYEAADKWVA AVGKDRPFMGGQKPNLADL
 AVYGVLRVMEGLDAFDDLMQHHTHIQPWYLRVERAITEASPAH

Purity 85%, by SDS-PAGE with Coomassie Brilliant Blue staining.

 Tel: 1-631-559-9269 1-516-512-3133

 Email: info@creative-biomart.com  Fax: 1-631-938-8127

 45-1 Ramsey Road, Shirley, NY 11967, USA

Storage Store at 2-8°C for 1-2 weeks. Aliquot and store at -20°C to -80°C for up to 3 months, reconstitution with sterile water and addition of an equal volume of glycerol. Avoid repeat freeze-thaw cycles.

Reconstitution Dissolve the product in 200 µl sterile water to achieve a working concentration of 0.25 g/µl. If experimental compatibility allows, mix the aqueous solution with an equal volume of glycerol (1:1 ratio) after initial reconstitution.

GENE INFORMATION

Gene Name [PTGES2 prostaglandin E synthase 2 \[Homo sapiens \]](#)

Official Symbol [PTGES2](#)

Synonyms PTGES2; prostaglandin E synthase 2; C9orf15, chromosome 9 open reading frame 15; FLJ14038; GATE-binding factor 1; microsomal prostaglandin E synthase-2; membrane-associated prostaglandin E synthase 2; gamma-interferon-activated transcriptional element-binding factor 1; GBF1; GBF-1; PGES2; C9orf15; mPGES-2; MGC11289;

Gene ID [80142](#)

mRNA Refseq [NM_001256335](#)

Protein Refseq [NP_001243264](#)

MIM [608152](#)

UniProt ID [Q9H7Z7](#)

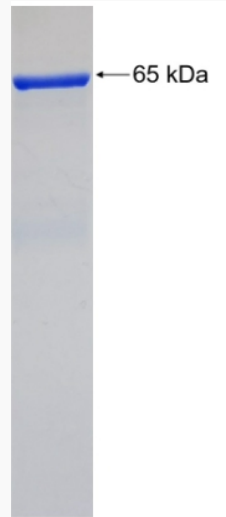
 Tel: 1-631-559-9269 1-516-512-3133

 Email: info@creative-biomart.com  Fax: 1-631-938-8127

 45-1 Ramsey Road, Shirley, NY 11967, USA



SDS-PAGE



Tel: 1-631-559-9269 1-516-512-3133

Email: info@creative-biomart.com Fax: 1-631-938-8127

45-1 Ramsey Road, Shirley, NY 11967, USA