

## Recombinant Human PTGES2 protein, His & T7-tagged

Cat. No. PTGES2-5623H Lot. No. (See product label)

### SPECIFICATION

<b>Product Overview</b>	Recombinant Human PTGES2 aa. (Tyr145~Thr357 (Accession # Q9H7Z7)) fused with N-terminal His & T7 tag was produced in E. coli cells.
<b>Species</b>	Human
<b>Source</b>	E.coli
<b>ProteinLength</b>	Tyr145~Thr357
<b>Description</b>	The protein encoded by this gene is a membrane-associated prostaglandin E synthase, which catalyzes the conversion of prostaglandin H2 to prostaglandin E2. This protein also has been shown to activate the transcription regulated by a gamma-interferon-activated transcription element (GATE). Multiple transcript variants have been found for this gene.
<b>Form</b>	Freeze-dried powder
<b>Molecular Mass</b>	Predicted Molecular Mass: 28.0kDa
<b>Endotoxin</b>	<1.0EU per 1g (determined by the LAL method)
<b>Purity</b>	>95%
<b>Applications</b>	SDS-PAGE; WB; ELISA; IP.

 Tel: 1-631-559-9269 1-516-512-3133

 Email: [info@creative-biomart.com](mailto:info@creative-biomart.com)  Fax: 1-631-938-8127

 45-1 Ramsey Road, Shirley, NY 11967, USA

<b>Stability</b>	The thermal stability is described by the loss rate. The loss rate was determined by accelerated thermal degradation test, that is, incubate the protein at 37°C for 48h, and no obvious degradation and precipitation were observed. The loss rate is less than 5% within the expiration date under appropriate storage condition.
<b>Storage</b>	Avoid repeated freeze/thaw cycles. Store at 2-8°C for one month. Aliquot and store at -80°C for 12 months.
<b>Storage buffer</b>	Supplied as lyophilized form in PBS, pH7.4, containing 5% trehalose, 0.01% sarcosyl.
<b>Reconstitution</b>	Reconstitute in sterile PBS, pH7.2-pH7.4.

## GENE INFORMATION

<b>Gene Name</b>	PTGES2 prostaglandin E synthase 2 [ Homo sapiens (human) ]
<b>Official Symbol</b>	PTGES2
<b>Synonyms</b>	PTGES2; prostaglandin E synthase 2; GBF1; GBF-1; PGES2; C9orf15; mPGES-2; prostaglandin E synthase 2; GATE-binding factor 1; gamma-interferon-activated transcriptional element-binding factor 1; mPGE synthase-2; membrane-associated prostaglandin E synthase 2; microsomal prostaglandin E synthase-2; prostaglandin-H(2) E-isomerase
<b>Gene ID</b>	80142
<b>mRNA Refseq</b>	NM_001256335.1
<b>Protein Refseq</b>	NP_001243264.1
<b>UniProt ID</b>	Q9H7Z7

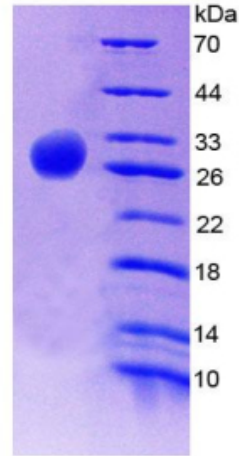
 Tel: 1-631-559-9269 1-516-512-3133

 Email: [info@creative-biomart.com](mailto:info@creative-biomart.com)  Fax: 1-631-938-8127

 45-1 Ramsey Road, Shirley, NY 11967, USA



SDS-PAGE



15% SDS-PAGE

Tel: 1-631-559-9269 1-516-512-3133

Email: [info@creative-biomart.com](mailto:info@creative-biomart.com) Fax: 1-631-938-8127

45-1 Ramsey Road, Shirley, NY 11967, USA