

Recombinant Human PTGES2 Protein (Tyr145-Thr357), N-His tagged

Cat. No. PTGES2-6602H Lot. No. (See product label)

SPECIFICATION

Product Overview	Recombinant human PTGES2 (Tyr145-Thr357) fused with the N-His tag was expressed in E. coli.
Species	Human
Source	E.coli
ProteinLength	Tyr145-Thr357
Form	Lyophilized powder/frozen liquid
Molecular Mass	26.49 kDa
Purity	> 90 % as determined by SDS-PAGE
Notes	For research use only.
Storage	Use a manual defrost freezer and avoid repeated freeze thaw cycles. Store at 2 to 8 centigrade for one week. Store at -20 to -80 centigrade for twelve months from the date of receipt.
Storage Buffer	0.01M PBS, pH 7.4, 0.02 % NLS
Reconstitution	Reconstitute in sterile water for a stock solution.

 Tel: 1-631-559-9269 1-516-512-3133

 Email: info@creative-biomart.com  Fax: 1-631-938-8127

 45-1 Ramsey Road, Shirley, NY 11967, USA

Shipping They are shipped out with dry ice/blue ice unless customers require otherwise.

GENE INFORMATION

Gene Name [PTGES2 prostaglandin E synthase 2 \[Homo sapiens \(human\) \]](#)

Official Symbol [PTGES2](#)

Synonyms PTGES2; prostaglandin E synthase 2; C9orf15, chromosome 9 open reading frame 15; FLJ14038; GATE-binding factor 1; microsomal prostaglandin E synthase-2; membrane-associated prostaglandin E synthase 2; gamma-interferon-activated transcriptional element-binding factor 1; GBF1; GBF-1; PGES2; C9orf15; mPGES-2; MGC11289;

Gene ID [80142](#)

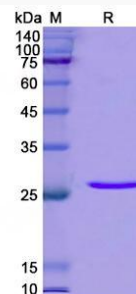
mRNA Refseq [NM_001256335](#)

Protein Refseq [NP_001243264](#)

MIM [608152](#)

UniProt ID [Q9H7Z7](#)

SDS-PAGE



 Tel: 1-631-559-9269 1-516-512-3133

 Email: info@creative-biomart.com  Fax: 1-631-938-8127

 45-1 Ramsey Road, Shirley, NY 11967, USA