

Recombinant Full Length Human PTGES3 Protein (1-160 aa), His-tagged

Cat. No. PTGES3-2568H Lot. No. (See product label)

SPECIFICATION

Product Overview	Recombinant Human PTGES3 Protein (1-160 aa) is produced by Yeast expression system. This protein is fused with a 10xHis tag at the N-terminal. Research Area: Cancer. Protein Description: Full length.
Species	Human
Source	Yeast
ProteinLength	1-160 aa
Description	Cytosolic prostaglandin synthase that catalyzes the oxidoreduction of prostaglandin endoperoxide H ₂ (PGH ₂) to prostaglandin E ₂ (PGE ₂). Molecular chaperone that localizes to genomic response elements in a hormone-dependent manner and disrupts receptor-mediated transcriptional activation, by promoting disassembly of transcriptional regulatory complexes. Facilitates HIF alpha proteins hydroxylation via interaction with EGLN1/PHD2, leading to recruit EGLN1/PHD2 to the HSP90 pathway.
Form	Tris-based buffer, 50% glycerol
Molecular Mass	21.2 kDa
AA Sequence	MQPASAKWYDRRDYVFIEFCVEDSKDVNVNFEKSKLTFSCGGSDNFKHLNEIDLF HCIDPNSDKHKRTRDRSILCCLRKGESGQSWPRLTKERAKLNWLSVDFNNWKDWD

 Tel: 1-631-559-9269 1-516-512-3133

 Email: info@creative-biomart.com  Fax: 1-631-938-8127

 45-1 Ramsey Road, Shirley, NY 11967, USA

DSDEDMSNFDRFSEMMNMGDEDVDLPEVDGADDDSQDSDDEKMPDLE

Purity > 85% as determined by SDS-PAGE.

Notes Repeated freezing and thawing is not recommended. Store working aliquots at 4 centigrade for up to one week.

Storage The shelf life is related to many factors, storage state, buffer ingredients, storage temperature and the stability of the protein itself. Generally, the shelf life of liquid form is 6 months at -20 centigrade/-80 centigrade. The shelf life of lyophilized form is 12 months at -20 centigrade/-80 centigrade.

Concentration A hardcopy of COA will be sent along with the products. Please refer to it for detailed information.

GENE INFORMATION

Gene Name [PTGES3 prostaglandin E synthase 3 \(cytosolic\) \[Homo sapiens \]](#)

Official Symbol [PTGES3](#)

Synonyms PTGES3; prostaglandin E synthase 3; cPGES; p23; TEBP; Hsp90 co-chaperone; P23;

Gene ID [10728](#)

mRNA Refseq [NM_006601](#)

Protein Refseq [NP_006592](#)

MIM [607061](#)

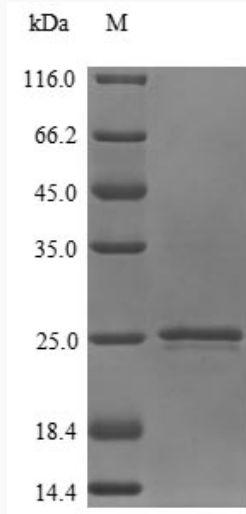
 Tel: 1-631-559-9269 1-516-512-3133

 Email: info@creative-biomart.com  Fax: 1-631-938-8127

 45-1 Ramsey Road, Shirley, NY 11967, USA

UniProt ID

Q15185



(Tris-Glycine gel) Discontinuous SDS-PAGE (reduced) with 5% enrichment gel and 15% separation gel.

Tel: 1-631-559-9269 1-516-512-3133

Email: info@creative-biomart.com Fax: 1-631-938-8127

45-1 Ramsey Road, Shirley, NY 11967, USA