

# Recombinant Human PTGES3 Protein, Myc/DDK-tagged, C13 and N15-labeled

**Cat. No.** PTGES3-4440H    **Lot. No.** (See product label)

## SPECIFICATION

<b>Product Overview</b>	PTGES3 MS Standard C13 and N15-labeled recombinant protein (NP_006592) with a C-terminal MYC/DDK tag, was expressed in HEK293 cells.
<b>Species</b>	Human
<b>Source</b>	HEK293
<b>Description</b>	This gene encodes an enzyme that converts prostaglandin endoperoxide H2 (PGH2) to prostaglandin E2 (PGE2). This protein functions as a co-chaperone with heat shock protein 90 (HSP90), localizing to response elements in DNA and disrupting transcriptional activation complexes. Alternative splicing results in multiple transcript variants. There are multiple pseudogenes of this gene on several different chromosomes.
<b>Molecular Mass</b>	18.7 kDa
<b>AA Sequence</b>	MQPASAKWYDRRDYVFIEFCVEDSKDVNVNFEKSKLTFSCGGSDNFKHLNEIDLF HCIDPNDSKHKRTDRSILCCLRKGESGQSWPRLTKERAKLNWLSVDFNNWKDWED DSEDEMSNFDRFSEMMNMGDEEDVDLPEVDGADDDSQSDDEKMPDLETRTRP LEQKLISEEDLAANDILDYKDDDDKV
<b>Purity</b>	> 80% as determined by SDS-PAGE and Coomassie blue staining
<b>Stability</b>	Stable for 3 months from receipt of products under proper storage and handling

 Tel: 1-631-559-9269    1-516-512-3133

 Email: [info@creative-biomart.com](mailto:info@creative-biomart.com)     Fax: 1-631-938-8127

 45-1 Ramsey Road, Shirley, NY 11967, USA

conditions.

**Storage** Store at -80 centigrade. Avoid repeated freeze-thaw cycles.

**Concentration** 50 µg/mL as determined by BCA

**Storage Buffer** 100 mM glycine, 25 mM Tris-HCl, pH 7.3.

## GENE INFORMATION

**Gene Name** PTGES3 prostaglandin E synthase 3 [ Homo sapiens (human) ]

**Official Symbol** PTGES3

**Synonyms** PTGES3; prostaglandin E synthase 3 (cytosolic); prostaglandin E synthase 3; cPGES; p23; TEBP; Hsp90 co-chaperone; telomerase-binding protein p23; progesterone receptor complex p23; cytosolic prostaglandin E synthase; cytosolic prostaglandin E2 synthase; unactive progesterone receptor, 23 kD; P23;

**Gene ID** 10728

**mRNA Refseq** NM\_006601

**Protein Refseq** NP\_006592

**MIM** 607061

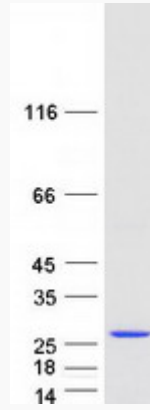
**UniProt ID** Q15185

 Tel: 1-631-559-9269 1-516-512-3133

 Email: [info@creative-biomart.com](mailto:info@creative-biomart.com)  Fax: 1-631-938-8127

 45-1 Ramsey Road, Shirley, NY 11967, USA

**SDS-PAGE**



 Tel: 1-631-559-9269 1-516-512-3133

 Email: [info@creative-biomart.com](mailto:info@creative-biomart.com)  Fax: 1-631-938-8127

 45-1 Ramsey Road, Shirley, NY 11967, USA