

# Recombinant Human PTGIS Protein, Myc/DDK-tagged, C13 and N15-labeled

**Cat. No.** PTGIS-2002H    **Lot. No.** (See product label)

## SPECIFICATION

<b>Product Overview</b>	PTGIS MS Standard C13 and N15-labeled recombinant protein (NP_000952) with a C-terminal MYC/DDK tag, was expressed in HEK293 cells.
<b>Species</b>	Human
<b>Source</b>	HEK293
<b>Description</b>	<p>This gene encodes a member of the cytochrome P450 superfamily of enzymes. The cytochrome P450 proteins are monooxygenases which catalyze many reactions involved in drug metabolism and synthesis of cholesterol, steroids and other lipids. However, this protein is considered a member of the cytochrome P450 superfamily on the basis of sequence similarity rather than functional similarity. This endoplasmic reticulum membrane protein catalyzes the conversion of prostaglandin H2 to prostacyclin (prostaglandin I2), a potent vasodilator and inhibitor of platelet aggregation. An imbalance of prostacyclin and its physiological antagonist thromboxane A2 contribute to the development of myocardial infarction, stroke, and atherosclerosis.</p>
<b>Molecular Mass</b>	57.1 kDa
<b>AA Sequence</b>	MAWAALLGLLAALLLLLLLRRRTRRPGEPLDLGSIPWLGALDFGKDAASFLTRM KEKHGDIFTILVGGRYVTLLDPHSYDAVVWEPRTRLDHFHAYAIFLMERIFDVQLPHY SPSDEKARMKLTLLHRELQALTEAMYTNLHAVLLGDATEAGSGWHEMGLLDFSYSF

 Tel: 1-631-559-9269    1-516-512-3133

 Email: [info@creative-biomart.com](mailto:info@creative-biomart.com)     Fax: 1-631-938-8127

 45-1 Ramsey Road, Shirley, NY 11967, USA

LLRAGYLTLYGIEALPRTHESQAQDRVHSADVHTFRQLDRLLPKLARGSLSVGDKD  
 HMCSVKSRLWKLLSPARLARRAHRSKWLESYLLHLEEMGVSEEMQARALVLQLWA  
 TQGNMGPAAFWLLLFLKNPEALAAVRGELESILWQAEQPVSTTTLPQKVLDPSTPV  
 LDSVLSESLRLTAAPFITREVVDLAMPADGREFNLRRGDRLLLFPFLSPQRDPFIY  
 TDPEVFKYNRFLNPDGSEKKDFYKDGKRLKYNMPWGAGHNHCLGRSYAVNSIKQ  
 FVFLVLVHLDLELINADVEIPEFDLSRYGFGLMQPEHDVPPVRYRIRPTRTRPLEQKLIS  
 EEDLAANDILDYKDDDDKV

**Purity** > 80% as determined by SDS-PAGE and Coomassie blue staining

**Stability** Stable for 3 months from receipt of products under proper storage and handling conditions.

**Storage** Store at -80 centigrade. Avoid repeated freeze-thaw cycles.

**Concentration** 50 µg/mL as determined by BCA

**Storage Buffer** 100 mM glycine, 25 mM Tris-HCl, pH 7.3.

## GENE INFORMATION

**Gene Name** [PTGIS prostaglandin I2 synthase \[ Homo sapiens \(human\) \]](#)

**Official Symbol** [PTGIS](#)

**Synonyms** PTGIS; prostaglandin I2 (prostacyclin) synthase; prostacyclin synthase; CYP8A1; cytochrome P450; family 8; subfamily A; polypeptide 1; PGIS; prostaglandin I2 synthase; cytochrome P450, family 8, subfamily A, polypeptide 1; CYP8; PTGI; MGC126858; MGC126860;

**Gene ID** [5740](#)

 Tel: 1-631-559-9269 1-516-512-3133

 Email: [info@creative-biomart.com](mailto:info@creative-biomart.com)  Fax: 1-631-938-8127

 45-1 Ramsey Road, Shirley, NY 11967, USA

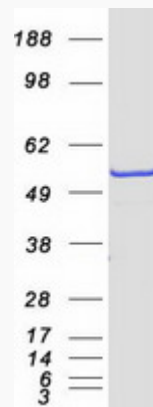
mRNA Refseq [NM\\_000961](#)

Protein Refseq [NP\\_000952](#)

MIM [601699](#)

UniProt ID [Q16647](#)

SDS-PAGE



 Tel: 1-631-559-9269 1-516-512-3133

 Email: [info@creative-biomart.com](mailto:info@creative-biomart.com)  Fax: 1-631-938-8127

 45-1 Ramsey Road, Shirley, NY 11967, USA