

## Recombinant Human PTGIS protein, His-tagged

Cat. No. PTGIS-2970H Lot. No. (See product label)

### SPECIFICATION

<b>Product Overview</b>	Recombinant Human PTGIS protein(100-285 aa), fused with N-terminal His tag, was expressed in E.coli.
<b>Species</b>	Human
<b>Source</b>	E.coli
<b>ProteinLength</b>	100-285 aa
<b>Form</b>	The purified protein was Lyophilized from sterile PBS (58mM Na <sub>2</sub> HPO <sub>4</sub> , 17mM NaH <sub>2</sub> PO <sub>4</sub> , 68mM NaCl, pH7.4). 5 % trehalose and 5 % mannitol are added as protectant before lyophilization.
<b>AASequence</b>	AIFLMERIFDVQLPHYSDEKARMKLLHRELQALTEAMYNLHAVLLGDATEAGS GWHEMGLLDFFSYFLLRAGYLTLYGIEALPRTHESQAQDRVHSADVFTFRQLDRL LPKLARGSLSVGDKDHMCSVKSRLWKLLSPARLARRAHRKWLKSYLLHLEEMGVS EEMQARALVLQLWATQ
<b>Purity</b>	85%, by SDS-PAGE with Coomassie Brilliant Blue staining.
<b>Storage</b>	Store at 2-8°C for 1-2 weeks. Aliquot and store at -20°C to -80°C for up to 3 months, reconstitution with sterile water and addition of an equal volume of glycerol. Avoid repeat freeze-thaw cycles.
<b>Reconstitution</b>	Dissolve the product in 200 µl sterile water to achieve a working concentration of 0.25

 Tel: 1-631-559-9269 1-516-512-3133

 Email: [info@creative-biomart.com](mailto:info@creative-biomart.com)  Fax: 1-631-938-8127

 45-1 Ramsey Road, Shirley, NY 11967, USA

g/μl. If experimental compatibility allows, mix the aqueous solution with an equal volume of glycerol (1:1 ratio) after initial reconstitution.

## GENE INFORMATION

<b>Gene Name</b>	PTGIS prostaglandin I2 (prostacyclin) synthase [ Homo sapiens ]
<b>Official Symbol</b>	PTGIS
<b>Synonyms</b>	PTGIS; prostaglandin I2 (prostacyclin) synthase; prostacyclin synthase; CYP8A1; cytochrome P450; family 8; subfamily A; polypeptide 1; PGIS; prostaglandin I2 synthase; cytochrome P450, family 8, subfamily A, polypeptide 1; CYP8; PTGI; MGC126858; MGC126860;
<b>Gene ID</b>	5740
<b>mRNA Refseq</b>	NM_000961
<b>Protein Refseq</b>	NP_000952
<b>MIM</b>	601699
<b>UniProt ID</b>	Q16647

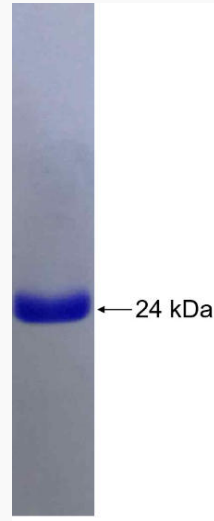
 Tel: 1-631-559-9269 1-516-512-3133

 Email: [info@creative-biomart.com](mailto:info@creative-biomart.com)  Fax: 1-631-938-8127

 45-1 Ramsey Road, Shirley, NY 11967, USA



SDS-PAGE



Tel: 1-631-559-9269 1-516-512-3133

Email: [info@creative-biomart.com](mailto:info@creative-biomart.com) Fax: 1-631-938-8127

45-1 Ramsey Road, Shirley, NY 11967, USA