

Recombinant Human PTGIS Protein (Thr24-Pro500), N-His tagged

Cat. No. PTGIS-6066H Lot. No. (See product label)

SPECIFICATION

Product Overview	Recombinant human PTGIS (Thr24-Pro500) fused with the N-His tag was expressed in E. coli.
Species	Human
Source	E.coli
ProteinLength	Thr24-Pro500
Form	Lyophilized powder/frozen liquid
Molecular Mass	56.88 kDa
Purity	> 90 % as determined by SDS-PAGE
Notes	For research use only.
Storage	Use a manual defrost freezer and avoid repeated freeze thaw cycles. Store at 2 to 8 centigrade for one week. Store at -20 to -80 centigrade for twelve months from the date of receipt.
Storage Buffer	0.01M PBS, pH 7.4, 0.02 % NLS
Reconstitution	Reconstitute in sterile water for a stock solution.

 Tel: 1-631-559-9269 1-516-512-3133

 Email: info@creative-biomart.com  Fax: 1-631-938-8127

 45-1 Ramsey Road, Shirley, NY 11967, USA

Shipping They are shipped out with dry ice/blue ice unless customers require otherwise.

GENE INFORMATION

Gene Name PTGIS prostaglandin I2 (prostacyclin) synthase [Homo sapiens (human)]

Official Symbol PTGIS

Synonyms PTGIS; prostaglandin I2 (prostacyclin) synthase; prostacyclin synthase; CYP8A1; cytochrome P450; family 8; subfamily A; polypeptide 1; PGIS; prostaglandin I2 synthase; cytochrome P450, family 8, subfamily A, polypeptide 1; CYP8; PTGI; MGC126858; MGC126860;

Gene ID 5740

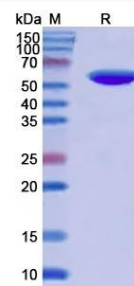
mRNA Refseq NM_000961

Protein Refseq NP_000952

MIM 601699

UniProt ID Q16647

SDS-PAGE



 Tel: 1-631-559-9269 1-516-512-3133

 Email: info@creative-biomart.com  Fax: 1-631-938-8127

 45-1 Ramsey Road, Shirley, NY 11967, USA