

Active Recombinant Full Length Human PTGIS Protein, C-Flag-tagged

Cat. No. PTGIS-717HFL **Lot. No.** (See product label)

SPECIFICATION

Product Overview	Recombinant Full Length Human PTGIS Protein, fused to Flag-tag at C-terminus, was expressed in Mammalian cells.
Species	Human
Source	Mammalian Cells
Description	This gene encodes a member of the cytochrome P450 superfamily of enzymes. The cytochrome P450 proteins are monooxygenases which catalyze many reactions involved in drug metabolism and synthesis of cholesterol, steroids and other lipids. However, this protein is considered a member of the cytochrome P450 superfamily on the basis of sequence similarity rather than functional similarity. This endoplasmic reticulum membrane protein catalyzes the conversion of prostaglandin H2 to prostacyclin (prostaglandin I2), a potent vasodilator and inhibitor of platelet aggregation. An imbalance of prostacyclin and its physiological antagonist thromboxane A2 contribute to the development of myocardial infarction, stroke, and atherosclerosis.
Form	25 mM Tris HCl, pH 7.3, 100 mM glycine, 10% glycerol.
Bio-activity	Enzyme substrate
Molecular Mass	56.9 kDa

 Tel: 1-631-559-9269 1-516-512-3133

 Email: info@creative-biomart.com  Fax: 1-631-938-8127

 45-1 Ramsey Road, Shirley, NY 11967, USA

AA Sequence	<p>MAWAALLGLLAALLLLLLLSSRRRTRRPGEPPDLGSIPLWLGALDFGKDAASFLTRM KEKHGDIFTILVG GRYVTVLLDPHSYDAVVWEPRTRLDFHAYAIFLMERIFDVQLPHY SPSDEKARMKLTLLHRELQALTEAM YTNLHAVLLGDATEAGSGWHEMGLLDFSYSF LLRAGYLTLYGIEALPRTHESQAQDRVHSADVFTFRQL DRLLPKLARGSLSVGDK DHMCSVKSRLWKLLSPARLARRAHRKWLSEYLLHLEEMGVSEEMQARALVLQ LW ATQGNMGPAAFWLLLFLKNPEALAAVRGELESILWQAEQPVSQTTTLPQKVL DSTP VLDSVLSESLR LTAAPFITREVVVDLAMPADGREFNLRRGDRLLLFPFLSPQRDPE IYTDPEVFKYNRFLNPDGSEKKDF YKDGKRLKNYNMPWGAGHNNHCLGRSYAVNSI KQFVFLVLVHLDLELINADVEIPEFDLSRYGFGLMQPEH DVPVRYRIRPTRTRPLEQKLISEEDLAANDILDYKDDDDKV</p>
Purity	> 80% as determined by SDS-PAGE and Coomassie blue staining.
Stability	Stable for 12 months from the date of receipt of the product under proper storage and handling conditions. Avoid repeated freeze-thaw cycles.
Storage	Store at -80 centigrade.
Concentration	>50 ug/mL as determined by microplate BCA method.
Preparation	Recombinant protein was captured through anti-DDK affinity column followed by conventional chromatography steps.
Protein Families	Druggable Genome, P450, Transmembrane
Protein Pathways	Arachidonic acid metabolism, Metabolic pathways
Full Length	Full L.

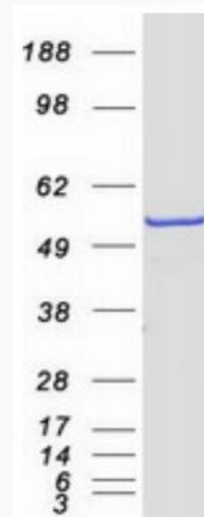
GENE INFORMATION

 Tel: 1-631-559-9269 1-516-512-3133

 Email: info@creative-biomart.com  Fax: 1-631-938-8127

 45-1 Ramsey Road, Shirley, NY 11967, USA

Gene Name	PTGIS prostaglandin I2 synthase [Homo sapiens (human)]
Official Symbol	PTGIS
Synonyms	CYP8; PGIS; PTGI; CYP8A1
Gene ID	5740
mRNA Refseq	NM_000961.4
Protein Refseq	NP_000952.1
MIM	601699
UniProt ID	Q16647



Coomassie blue staining of purified PTGIS protein.

 Tel: 1-631-559-9269 1-516-512-3133

 Email: info@creative-biomart.com  Fax: 1-631-938-8127

 45-1 Ramsey Road, Shirley, NY 11967, USA