

Recombinant Human PTGS1 Protein, His-tagged

Cat. No. PTGS1-012H Lot. No. (See product label)

SPECIFICATION

Product Overview	Recombinant Human PTGS1 protein (24-599) with a N-terminal His-tag was expressed in baculovirus system
Species	Human
Source	Insect Cells
ProteinLength	24-599
Description	This is one of two genes encoding similar enzymes that catalyze the conversion of arachinodate to prostaglandin. The encoded protein regulates angiogenesis in endothelial cells, and is inhibited by nonsteroidal anti-inflammatory drugs such as aspirin. Based on its ability to function as both a cyclooxygenase and as a peroxidase, the encoded protein has been identified as a moonlighting protein. The protein may promote cell proliferation during tumor progression. Alternative splicing results in multiple transcript variants.
Molecular Mass	70 kDa
Purity	≥85% estimated by SDS-PAGE
Unit Definition	One unit is defined as the amount of enzyme required to consume 1 nmol of oxygen per minute at 37 centigrade in 100 mM Tris, pH 8.0, containing 100 μ M arachidonate, 5 mM EDTA, 2 mM phenol, and 1 μ M hematin.

 Tel: 1-631-559-9269 1-516-512-3133

 Email: info@creative-biomart.com  Fax: 1-631-938-8127

 45-1 Ramsey Road, Shirley, NY 11967, USA

Stability	≥ 1 year
Storage	-80 centigrade
Storage Buffer	80 mM Tris, pH 8.0, with 0.01% polysorbate 20, 300 μM DDC, and 10% glycerol
Shipping	Dry ice in continental US, may vary elsewhere.

GENE INFORMATION

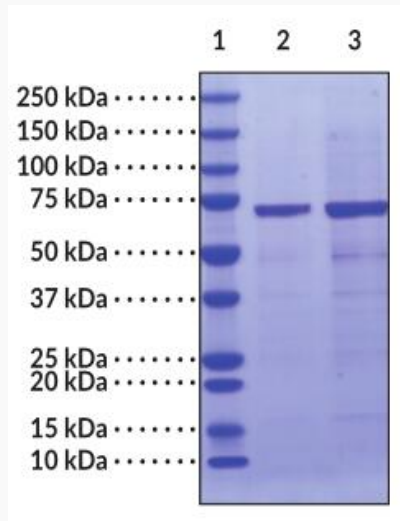
Gene Name	PTGS1 prostaglandin-endoperoxide synthase 1 [Homo sapiens (human)]
Official Symbol	PTGS1
Synonyms	PTGS1; prostaglandin-endoperoxide synthase 1; COX1; COX3; PHS1; PCOX1; PES-1; PGHS1; PTGHS; PGG/HS; PGHS-1; prostaglandin G/H synthase 1; PGH synthase 1; cyclooxygenase-1; prostaglandin H2 synthase 1; prostaglandin-endoperoxide synthase 1 (prostaglandin G/H synthase and cyclooxygenase); EC 1.14.99.1
Gene ID	5742
mRNA Refseq	NM_000962
Protein Refseq	NP_000953
MIM	176805
UniProt ID	P23219

 Tel: 1-631-559-9269 1-516-512-3133

 Email: info@creative-biomart.com  Fax: 1-631-938-8127

 45-1 Ramsey Road, Shirley, NY 11967, USA

**SDS-PAGE Analysis
of PTGS1**



Lane 1: MW Markers

Lane 2: COX-1 (2 g)

Lane 3: COX-1 (4 g)

 Tel: 1-631-559-9269 1-516-512-3133

 Email: info@creative-biomart.com  Fax: 1-631-938-8127

 45-1 Ramsey Road, Shirley, NY 11967, USA