

Active Recombinant Sheep PTGS2 Protein

Cat. No. PTGS2-010S Lot. No. (See product label)

SPECIFICATION

Product Overview	Recombinant Sheep PTGS2 protein (24-599) without tag was expressed in Sf21 cells
Species	Sheep
Source	Insect Cells
ProteinLength	24-599
Description	Cyclooxygenase (COX)-1 and -2, also called prostaglandin endoperoxide H synthases-1 and -2 (PGHS-1 and -2) are key regulatory enzymes in the PG biosynthetic pathway. COX enzymes catalyze the committed step in the conversion of arachidonic acid to PGH ₂ . These enzymes are the major targets for NSAIDs that are used to reduce pain, inflammation, and fever.
Bio-activity	>20,000 U/mg (minimum)
Molecular Mass	70 kDa
Purity	≥80% estimated by SDS-PAGE
Unit Definition	One unit is defined as the amount of enzyme required to consume 1 nmol of oxygen per minute 37 centigrade in 100 mM Tris, pH 8.0, containing 100 μM arachidonate, 5 mM EDTA, 2 mM phenol, and 1 μM hematin.
Stability	≥ 6 months

 Tel: 1-631-559-9269 1-516-512-3133

 Email: info@creative-biomart.com  Fax: 1-631-938-8127

 45-1 Ramsey Road, Shirley, NY 11967, USA

Storage -80 centigrade

Shipping Dry ice in continental US, may vary elsewhere.

GENE INFORMATION

Gene Name [PTGS2 prostaglandin-endoperoxide synthase 2 \[Ovis aries \(sheep\) \]](#)

Official Symbol [PTGS2](#)

Synonyms PTGS2; prostaglandin-endoperoxide synthase 2; PGHS-2; prostaglandin G/H synthase 2; COX-2; PGH synthase 2; PHS II; cyclooxygenase, prostaglandin endoperoxide H synthase-2; cyclooxygenase-2; prostaglandin H synthase-2; prostaglandin H2 synthase 2; prostaglandin-endoperoxide synthase 2 (prostaglandin G/H synthase and cyclooxygenase); EC 1.14.99.1

Gene ID [443460](#)

mRNA Refseq [NM_001009432](#)

Protein Refseq [NP_001009432](#)

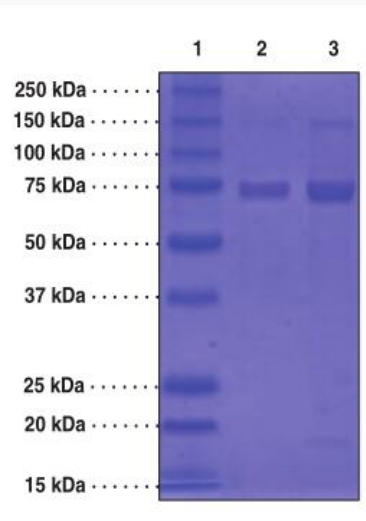
UniProt ID [P79208](#)

 Tel: 1-631-559-9269 1-516-512-3133

 Email: info@creative-biomart.com  Fax: 1-631-938-8127

 45-1 Ramsey Road, Shirley, NY 11967, USA

**SDS-PAGE Analysis
of PTGS2**



Lane 1: MW Markers

Lane 2: COX-2 (2 g)

Lane 3: COX-2 (5 g)

 Tel: 1-631-559-9269 1-516-512-3133

 Email: info@creative-biomart.com  Fax: 1-631-938-8127

 45-1 Ramsey Road, Shirley, NY 11967, USA