

Native Sheep PTGS2 Protein

Cat. No. PTGS2-57S Lot. No. (See product label)

SPECIFICATION

| | |
|-------------------------|--|
| Product Overview | Native sheep PTGS2 protein without tag was isolated from sheep placenta. |
| Species | Sheep |
| Source | Sheep placenta |
| Description | Cyclooxygenase (COX) catalyzes the first step in the biosynthesis of prostaglandins, thromboxanes, and prostacyclins: the conversion of arachidonic acid to prostaglandin H ₂ . Recent discoveries of the induction of cyclooxygenase by a variety of stimuli such as phorbol esters, lipopolysaccharides, and cytokines led to the hypothesis that the inducible form of cyclooxygenase, COX-2, is responsible for the biosynthesis of prostaglandins under acute inflammatory conditions. |
| Molecular Mass | 72 kDa |
| Purity | >95% estimated by SDS-PAGE |
| Stability | ≥ 1 year |
| Storage | Store it at -80 centigrade |
| Storage Buffer | Laemmli buffer (2% SDS, 10% glycerol, 0.70 M Tris-HCl, pH 6.8, 1.5% 2-mercaptoethanol, 0.04 % bromophenol blue) |

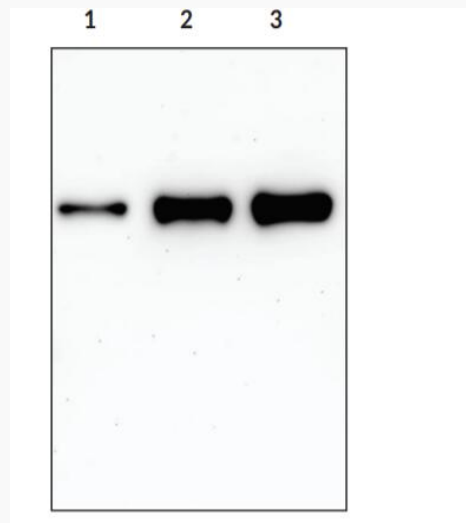
GENE INFORMATION

 Tel: 1-631-559-9269 1-516-512-3133

 Email: info@creative-biomart.com  Fax: 1-631-938-8127

 45-1 Ramsey Road, Shirley, NY 11967, USA

| | |
|------------------------|--|
| Gene Name | PTGS2 prostaglandin-endoperoxide synthase 2 [<i>Ovis aries</i> (sheep)] |
| Official Symbol | PTGS2 |
| Synonyms | PTGS2; prostaglandin-endoperoxide synthase 2; PGHS-2; prostaglandin G/H synthase 2; COX-2; PGH synthase 2; PHS II; cyclooxygenase, prostaglandin endoperoxide H synthase-2; cyclooxygenase-2; prostaglandin H synthase-2; prostaglandin H2 synthase 2; prostaglandin-endoperoxide synthase 2 (prostaglandin G/H synthase and cyclooxygenase) |
| Gene ID | 443460 |
| mRNA Refseq | NM_001009432 |
| Protein Refseq | NP_001009432 |
| UniProt ID | P79208 |

SDS-PAGE Analysis of PTGS2


 Tel: 1-631-559-9269 1-516-512-3133

 Email: info@creative-biomart.com  Fax: 1-631-938-8127

 45-1 Ramsey Road, Shirley, NY 11967, USA



Lane 1: COX-2 Standard (10 ng); Lane 2: COX-2 Standard (50 ng); Lane 3: COX-2 Standard (100 ng). Probed with COX-2 Polyclonal Antibody.

 Tel: 1-631-559-9269 1-516-512-3133

 Email: info@creative-biomart.com  Fax: 1-631-938-8127

 45-1 Ramsey Road, Shirley, NY 11967, USA