

Recombinant Full Length Human PTK2B Protein, C-Flag-tagged

Cat. No. PTK2B-1427HFL Lot. No. (See product label)

SPECIFICATION

Product Overview

Recombinant Full Length Human PTK2B Protein, fused to Flag-tag at C-terminus, was expressed in Mammalian cells.

Species

Human

Source

Mammalian Cells

Description

This gene encodes a cytoplasmic protein tyrosine kinase which is involved in calcium-induced regulation of ion channels and activation of the map kinase signaling pathway. The encoded protein may represent an important signaling intermediate between neuropeptide-activated receptors or neurotransmitters that increase calcium flux and the downstream signals that regulate neuronal activity. The encoded protein undergoes rapid tyrosine phosphorylation and activation in response to increases in the intracellular calcium concentration, nicotinic acetylcholine receptor activation, membrane depolarization, or protein kinase C activation. This protein has been shown to bind CRK-associated substrate, nephrocystin, GTPase regulator associated with FAK, and the SH2 domain of GRB2. The encoded protein is a member of the FAK subfamily of protein tyrosine kinases but lacks significant sequence similarity to kinases from other subfamilies. Four transcript variants encoding two different isoforms have been found for this gene.

Form

25 mM Tris HCl, pH 7.3, 100 mM glycine, 10% glycerol.

 Tel: 1-631-559-9269 1-516-512-3133

 Email: info@creative-biomart.com  Fax: 1-631-938-8127

 45-1 Ramsey Road, Shirley, NY 11967, USA

Molecular Mass	115.7 kDa
AA Sequence	<p>MSGVSEPLSRVKLGLTLRRPEGPAEPMVVVPVDVEKEDVRILKVCFYNSFNPGKNF KLVKCTVQTEIREI ITSILLSGRIGPNIRLAECYGLRLKHMKSDEIHWLHPQMTVGEVQ DKYECLHVEAEWRYDLQIRYLPEDF MESLKEDRTTLLYFYQQLRNDYMQRYASKVS EGMALQLGCLELRRFFKDMPHNALDKKSNFELLEKEVGL DLFFPKQMQENLKPKQF RKMIQQTFFQQYASLREEECVMKFFNTLAGFANIDQETYRCELIQGWNITVDLV IGPK GIRQLTSQDAKPTCLAEFKQIRSIRCLPLEEGQAVLQLGIEGAPQALSIKTSSLAEAN MADLIDG YCRLQGEHQGSLIIHPRKDGEKRNSLPQIPMLNLEARRSHLSESCSIESDI YAEIPDETLRRPGGPQYGI AREDVVLNRILGEGFFGEVYEGVYTNHKGEKINVAVKT CKKDCTLDNKEKFMSEAVIMKNLDHPIVKLI GIIIEEPTWIIMELYLYGELGHYLERN KNSLKVLTLVLYSLQICKAMAYLESINCVHRDIAVRNILVASP ECVKLGDFGLSRYIED EDYYKASVTRLPIKWMSPESINFRRFTTASDVWMFAVCMWEILSFGKQPFFWLE NK DVIGVLEKGDRLPKPDLCPPVLYTLMTRCWDYDPSDRPRFTELVCSLSDVYQMEKDI AMEQERNARYR TPKILEPTAFQEPPPKPSRPKYRPPPQTNLLAPKLQFQVPEGLCA SSPTLTSPMEYPSVNSLHTPPLHR HNVFKRHSMREEDFIQPSREEAQQWLWEAE KVKMRQILDKQQKQMVEDYQWLRQEEKSLDPMVYMNDTSP LTPEKEVGYLEFTGP PQKPPRLGAQSIQPTANLDRDLDLVLNVMELVRVLELKNELCQLPPEGYVVVV K NVGLTLRKLIGSVDDLLPSLPSSSRTEIEGTQKLLNKDLAELINKMRLAQQNAVTSLSE ECKRQMLTAS HTLAVDAKNLLDAVDQAKVLANLAHPPAETRTRPLEQKLISEEDLAANDILDYKDDDD KV</p>
Purity	> 80% as determined by SDS-PAGE and Coomassie blue staining.
Stability	Stable for 12 months from the date of receipt of the product under proper storage and handling conditions. Avoid repeated freeze-thaw cycles.
Storage	Store at -80 centigrade.

 Tel: 1-631-559-9269 1-516-512-3133

 Email: info@creative-biomart.com  Fax: 1-631-938-8127

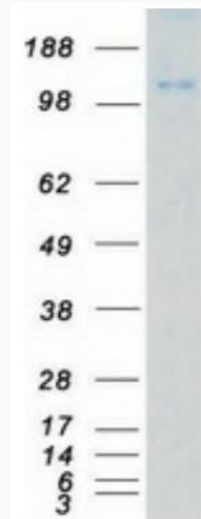
 45-1 Ramsey Road, Shirley, NY 11967, USA

Concentration	>50 ug/mL as determined by microplate BCA method.
Preparation	Recombinant protein was captured through anti-DDK affinity column followed by conventional chromatography steps.
Protein Families	Druggable Genome, Protein Kinase
Protein Pathways	Calcium signaling pathway, Chemokine signaling pathway, GnRH signaling pathway, Leukocyte transendothelial migration, Natural killer cell mediated cytotoxicity
Full Length	Full L.
GENE INFORMATION	
Gene Name	PTK2B protein tyrosine kinase 2 beta [Homo sapiens (human)]
Official Symbol	PTK2B
Synonyms	PKB; PTK; CAKB; FAK2; PYK2; CADTK; FADK2; RAFTK
Gene ID	2185
mRNA Refseq	NM_173174.3
Protein Refseq	NP_775266.1
MIM	601212
UniProt ID	Q14289

 Tel: 1-631-559-9269 1-516-512-3133

 Email: info@creative-biomart.com  Fax: 1-631-938-8127

 45-1 Ramsey Road, Shirley, NY 11967, USA



Coomassie blue staining of purified PTK2B protein.

 Tel: 1-631-559-9269 1-516-512-3133

 Email: info@creative-biomart.com  Fax: 1-631-938-8127

 45-1 Ramsey Road, Shirley, NY 11967, USA