

# Recombinant Human PTK2B Protein, Myc/DDK-tagged, C13 and N15-labeled

Cat. No. PTK2B-836H Lot. No. (See product label)

## SPECIFICATION

**Product Overview** PTK2B MS Standard C13 and N15-labeled recombinant protein (NP\_775266) with a C-terminal MYC/DDK tag, was expressed in HEK293 cells.

**Species** Human

**Source** HEK293

**Description** This gene encodes a cytoplasmic protein tyrosine kinase which is involved in calcium-induced regulation of ion channels and activation of the map kinase signaling pathway. The encoded protein may represent an important signaling intermediate between neuropeptide-activated receptors or neurotransmitters that increase calcium flux and the downstream signals that regulate neuronal activity. The encoded protein undergoes rapid tyrosine phosphorylation and activation in response to increases in the intracellular calcium concentration, nicotinic acetylcholine receptor activation, membrane depolarization, or protein kinase C activation. This protein has been shown to bind CRK-associated substrate, nephrocystin, GTPase regulator associated with FAK, and the SH2 domain of GRB2. The encoded protein is a member of the FAK subfamily of protein tyrosine kinases but lacks significant sequence similarity to kinases from other subfamilies. Four transcript variants encoding two different isoforms have been found for this gene.

**Molecular Mass** 115.7 kDa

 Tel: 1-631-559-9269 1-516-512-3133

 Email: [info@creative-biomart.com](mailto:info@creative-biomart.com)  Fax: 1-631-938-8127

 45-1 Ramsey Road, Shirley, NY 11967, USA

**AA Sequence**

MSGVSEPLSRVKLGTLLRRPEGPAEPMVVVVPDVEKEDVRILKVCFYNSNFNPGKNF  
 KLVKCTVQTEIREIITSILLSGRIGNIRLAECYGLRLKHMKSDEIHWHLPQMTVGEVQ  
 DKYECLHVEAEWRYDLQIRYLPEDFMESLKEDRTTLLYFYQQLRNDYMQRYASKVS  
 EGMALQLGCLELRRFFKDMPHNALDKKSNFELLEKEVGLDLFFPKQMENLKPQKF  
 RKMIQQTFFQYASLREEECVMKFFNTLAGFANIDQETYRCELIQGWNITVDLVIGPK  
 GIRQLTSQDAKPTCLAEFKQIRSIRCLPLEEGQAVLQLGIEGAPQALSIKTSSLAEAN  
 MADLIDGYCRLQGEHQGSLIHPKDGKRNLSLPQIPMLNLEARRSHLSESCSIESDI  
 YAEIPDETLRRPGGPQYGIAREDVVLNRLGEGFFGEVYEGVYTNHKGEKINVAVKT  
 CKKDCTLDNKEKFMSEAVIMKNLDHPIVVKLIGIIEEPTWIIMELYLYGELGHYLERN  
 KNSLKVLTVLVLSLQICKAMAYLESINCVHRDIAVRNILVASPECVKLGDFGLSRYIED  
 EDYYKASVTRLPIKWMSPESINFRRFTTASDVWMFAVCMWEILSFGKQPPFFWLENK  
 DVIGVLEKGDRLPKPDLCPPVLYTLMTRCWDYDPSDRPRFTELVCSLSDVYQMEKDI  
 AMEQERNARYRTPKILEPTAFQEPPPSPSRPKYRPPPQTNLLAPKLQFQVPEGLCA  
 SSPTLTSPMEYPSVNSLHTPPLHRHNVFKRHSMREEDFIQPSSREEAQQWLWEAEK  
 VKMRQILDKQQKQMVEDYQWLRQEEKSLDPMVYMNDTSPLTPEKEVGYLEFTGPP  
 QKPPRLGAQSIQPTANLDRDLDLVYLNVMELVRVLELKNELCQLPPEGYVVVVKNV  
 GLTLRKLIGSVDDLLPSLPSSSRTEIEGTQKLLNKDLAELINKMRLAQQNAVTSLSSEEC  
 KRQMLTASHTLAVDAKNLLDAVDQAKVLANLAHPPAETRTRPLEQKLISEEDLAANDI  
 LDYKDDDDKV

**Purity** > 80% as determined by SDS-PAGE and Coomassie blue staining

**Stability** Stable for 3 months from receipt of products under proper storage and handling conditions.

**Storage** Store at -80 centigrade. Avoid repeated freeze-thaw cycles.

**Concentration** 50 µg/mL as determined by BCA

**Storage Buffer** 100 mM glycine, 25 mM Tris-HCl, pH 7.3.

 Tel: 1-631-559-9269 1-516-512-3133

 Email: [info@creative-biomart.com](mailto:info@creative-biomart.com)  Fax: 1-631-938-8127

 45-1 Ramsey Road, Shirley, NY 11967, USA

**GENE INFORMATION**

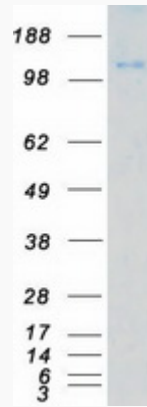
<b>Gene Name</b>	PTK2B PTK2B protein tyrosine kinase 2 beta [ Homo sapiens (human) ]
<b>Official Symbol</b>	PTK2B
<b>Synonyms</b>	PTK2B; PTK2B protein tyrosine kinase 2 beta; FAK2, protein tyrosine kinase 2 beta; protein-tyrosine kinase 2-beta; CADTK; CAKB; PTK; PYK2; RAFTK; FADK 2; CAK-beta; protein kinase B; focal adhesion kinase 2; cell adhesion kinase beta; proline-rich tyrosine kinase 2; calcium-dependent tyrosine kinase; related adhesion focal tyrosine kinase; calcium-regulated non-receptor proline-rich tyrosine kinase; PKB; FAK2; FADK2;
<b>Gene ID</b>	2185
<b>mRNA Refseq</b>	NM_173174
<b>Protein Refseq</b>	NP_775266
<b>MIM</b>	601212
<b>UniProt ID</b>	Q14289

 Tel: 1-631-559-9269 1-516-512-3133

 Email: [info@creative-biomart.com](mailto:info@creative-biomart.com)  Fax: 1-631-938-8127

 45-1 Ramsey Road, Shirley, NY 11967, USA

SDS-PAGE



 Tel: 1-631-559-9269 1-516-512-3133

 Email: [info@creative-biomart.com](mailto:info@creative-biomart.com)  Fax: 1-631-938-8127

 45-1 Ramsey Road, Shirley, NY 11967, USA