

## Recombinant Human PTP4A1 protein, His-tagged

Cat. No. PTP4A1-1559H Lot. No. (See product label)

### SPECIFICATION

<b>Product Overview</b>	Recombinant Human PTP4A1 protein(Q93096)(Met1-Cys170), fused with N-terminal His tag, was expressed in E.coli.
<b>Species</b>	Human
<b>Source</b>	N-His
<b>ProteinLength</b>	Met1-Cys170
<b>Tag</b>	N-His
<b>Form</b>	Supplied as 0.22µm filtered solution in 20mM Tris, 250mM NaCl, 1mM DTT, 20% Glycerol (pH 7.4).
<b>Bio-activity</b>	Measured by its ability to cleave a substrate. p-Nitrophenyl phosphate (pNPP). The specific activity is > 0.5 pmol/min/µg.
<b>Molecular Mass</b>	The protein has a predicted MW of 20.56 kDa same as Tris-Bis PAGE result.
<b>Endotoxin</b>	Less than 1EU per µg by the LAL method.
<b>Purity</b>	> 95% as determined by Tris-Bis PAGE; > 95% as determined by HPLC.
<b>Storage</b>	Valid for 12 months from date of receipt when stored at -80°C.;Recommend to aliquot the protein into smaller quantities for optimal storage. Please do not repeated freeze-

 Tel: 1-631-559-9269 1-516-512-3133

 Email: [info@creative-biomart.com](mailto:info@creative-biomart.com)  Fax: 1-631-938-8127

 45-1 Ramsey Road, Shirley, NY 11967, USA

thaw cycles.

**Reconstitution**

It is recommended that sterile water be added to the vial to prepare a stock solution of 0.2 ug/ul. Centrifuge the vial at 4°C before opening to recover the entire contents.

## GENE INFORMATION

**Gene Name** PTP4A1 protein tyrosine phosphatase type IVA, member 1 [ Homo sapiens ]

**Official Symbol** PTP4A1

**Synonyms**

PTP4A1; protein tyrosine phosphatase type IVA, member 1; protein tyrosine phosphatase type IVA 1; PRL 1; PTPCAAX1; PTP(CAAXI); protein-tyrosine phosphatase 4a1; Protein tyrosine phosphatase IVA1; protein tyrosine phosphatase type IVA protein 1; protein-tyrosine phosphatase of regenerating liver 1; HH72; PRL1; PRL-1; PTP(CAAX1); DKFZp779M0721;

**Gene ID** 7803

**mRNA Refseq** NM\_003463

**Protein Refseq** NP\_003454

**MIM** 601585

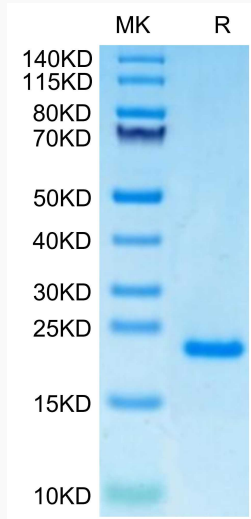
**UniProt ID** Q93096

 Tel: 1-631-559-9269 1-516-512-3133

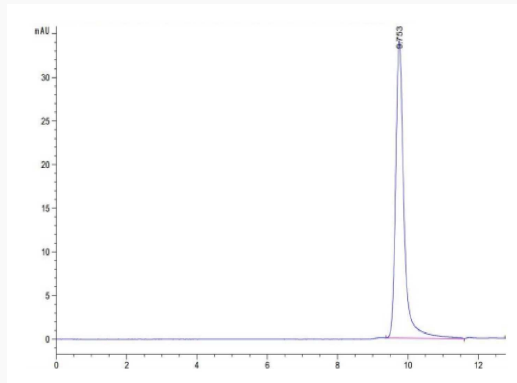
 Email: [info@creative-biomart.com](mailto:info@creative-biomart.com)  Fax: 1-631-938-8127

 45-1 Ramsey Road, Shirley, NY 11967, USA

**Tris-Bis PAGE**



**SEC-HPLC**



 Tel: 1-631-559-9269 1-516-512-3133

 Email: [info@creative-biomart.com](mailto:info@creative-biomart.com)  Fax: 1-631-938-8127

 45-1 Ramsey Road, Shirley, NY 11967, USA