

## Recombinant Human PTP4A1, GST-tagged

Cat. No. PTP4A1-674H Lot. No. (See product label)

### SPECIFICATION

<b>Product Overview</b>	Recombinant human PRL-1 was produced in <i>E. coli</i> . The catalytic domain of PRL-1 (aa 2-173) is fused at the N-terminus to a GST-tag, 45.7 kDa.
<b>Species</b>	Human
<b>Source</b>	<i>E. coli</i>
<b>Protein Length</b>	2-173 a.a.
<b>Description</b>	PRL phosphatases comprise a class of small phosphatases with oncogenic activity, which are prenylated at their C-termini. PRL-1 is overexpressed during cell proliferation in the liver and during differentiation of epithelial cells in the digestive tract.
<b>Source/Host</b>	<i>E. coli</i> .
<b>Application</b>	Study of enzyme kinetics and regulation, dephosphorylation of target substrates, and inhibitor screening.
<b>Long Term Storage</b>	-20°C.

### GENE INFORMATION

**Gene Name** PTP4A1 protein tyrosine phosphatase type IVA, member 1 [ *Homo sapiens* ]

 Tel: 1-631-559-9269 1-516-512-3133

 Email: [info@creative-biomart.com](mailto:info@creative-biomart.com)  Fax: 1-631-938-8127

 45-1 Ramsey Road, Shirley, NY 11967, USA

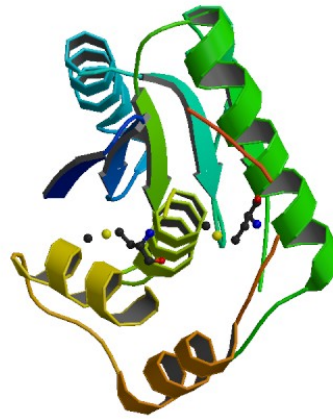
<b>Synonyms</b>	protein tyrosine phosphatase type IVA, member 1; HH72; PRL1; PRL-1; PTPCAAX1; PTP(CAAX1); DKFZp779M0721; PTP4A1; protein tyrosine phosphatase type IVA 1; PTP(CAAXI); protein-tyrosine phosphatase 4a1; Protein tyrosine phosphatase IVA1; protein tyrosine phosphatase type IVA protein 1; protein-tyrosine phosphatase of regenerating liver 1; Protein-tyrosine phosphatase 4a1; Protein-tyrosine phosphatase of regenerating liver 1; EC 3.1.3.48
<b>Gene ID</b>	7803
<b>mRNA Refseq</b>	NM_003463
<b>Protein Refseq</b>	NP_003454
<b>MIM</b>	601585
<b>UniProt ID</b>	Q93096
<b>Chromosome Location</b>	6q12
<b>Function</b>	protein tyrosine phosphatase activity; hydrolase activity

 Tel: 1-631-559-9269 1-516-512-3133

 Email: [info@creative-biomart.com](mailto:info@creative-biomart.com)  Fax: 1-631-938-8127

 45-1 Ramsey Road, Shirley, NY 11967, USA

PDB rendering based  
on 1rxd.



 Tel: 1-631-559-9269 1-516-512-3133

 Email: [info@creative-biomart.com](mailto:info@creative-biomart.com)  Fax: 1-631-938-8127

 45-1 Ramsey Road, Shirley, NY 11967, USA